

Activity Name	Original Duration	Planned Start	Planned Finish	2011				2012				2013				2014				2015				2016	
				Q3	Q4	Q1	Q2	Q3	Q4	Q1	Q2	Q3	Q4	Q1	Q2	Q3	Q4	Q1	Q2	Q3	Q4	Q1	Q2		
HY/2009/15 - CWB TUNNEL (CBTS SECTION)																									
SUBMISSIONS COMPLYING WITH EPs																									
EM&A Manual (rely on the Master EP's submission EP-364/2009/A Condition 2.9)																									
Baseline Monitoring Report (rely on the Master EP's submission EP-364/2009 Condition 3.3)																									
Monthly EM&A (rely on the masters EP's Submission, EP-364/2009/A Condition 3.4)																									
A dedicated website (rely on the master EP's submission, EP-364/2009/A Condition 4.2)																									
Management organization of main construction companies (FEP Condition 2.6)	1d	02-Oct-10	02-Oct-10																						
Work Schedule (FEP Condition 2.7)	1d	27-Oct-10	27-Oct-10																						
Location Plan (FEP Condition 2.8)	1d	27-Oct-10	27-Oct-10																						
Noise Management plan (FEP Condition 2.9)	1d	27-Oct-10	27-Oct-10																						
Landscape plan (FEP condition 2.10)	1d	31-Jan-11	31-Jan-11																						
EAST VENTILATION ADIT																									
CCT @ Portion 1, 2, 4, 6, 22	1315d	27-Sep-10	03-May-14																						
EV Adit @ Portion 4-Advance Works	526d	27-Sep-10	05-Mar-12																						
EV Adit Portion 1, 2, 6, 22	26d	22-Dec-11	16-Jan-12																						
EV Adit-based on Conforming Design	323d	15-Feb-12	02-Jan-13																						
TCBR1E (TS1 Area)																									
Diaphragm Wall Construction (incl. SI, & tests after completion)	107d	26-Apr-11	10-Aug-11																						
Excavation & Lateral Support, ELS	99d	16-Jul-11	22-Oct-11																						
Cut & Cover Tunnel Construction (incl. backfill)	78d	22-Oct-11	07-Jan-12																						
OHVD and Cable Trough (access from Portion 22)	76d	18-Dec-13	03-Mar-14																						
TCBR2 + TCBR3 (TS2 Area)																									
Diaphragm Wall Construction	118d	06-Jul-12	31-Oct-12																						
Excavation & Lateral Support, ELS	248d	06-Jul-12	10-Mar-13																						
Cut & Cover Tunnel Construction	164d	11-Mar-13	21-Aug-13																						
OHVD Cable Trough (Access from Portion 22)	150d	05-Aug-13	01-Jan-14																						
TCBR1W (TS4 Area)																									
Diaphragm Wall Construction	148d	28-Jun-11	22-Nov-11																						
Excavation & Lateral Support, ELS	319d	26-Jun-11	11-May-12																						
Landing Steps - Demolition/Reconstruct as footpath	40d	28-Jun-11	23-Aug-11																						

- ◆ Milestone
- ◆ Milestone
- ▬ Remaining Work
- ▬ Critical Remaining Work
- ▬ Actual Work

1 of 2

China State Construction Engineering (Hong Kong) Ltd.

Contract No. HY/2009/15 - Central Wan Chai By Pass - Tunnel

(CBTS Section)

Prepared by William Caluza			
Date	Revision	Checked	Approved
14-Mar-11	Revision C	ST	KL
	File: GC01a		
	(Layout:HY/2009/15: CWB - Summary)		

中國建築工程(香港)有限公司

CHINA STATE CONSTRUCTION ENGINEERING (HONG KONG) LTD

Activity Name	Original Duration	Planned Start	Planned Finish	2011					2012				2013				2014				2015				2016	
				Q3	Q4	Q1	Q2	Q3	Q4	Q1	Q2	Q3	Q4	Q1	Q2	Q3	Q4	Q1	Q2	Q3	Q4	Q1	Q2	Q3	Q4	Q1
Rock Excavation	235d	25-Apr-12	15-Dec-12																							
ME4-Diaphragm Wall	114d	10-May-12	19-Oct-12																							
AS Logistics Area for Mined Tunneling Works	174d	01-Jun-12	07-Feb-13																							
ME4-ELS Works	212d	01-Jun-12	02-Apr-13																							
SCL Entrusted Works	291d	18-Jul-12	08-Sep-13																							
Cut & Cover Tunnel Construction (w/o TS4 +)	111d	17-Dec-12	06-Apr-13																							
ME4-RC Structure	146d	28-Jan-13	21-Aug-13																							
OHVD and Cable Trough (Access from TZ5/TPCWAE/TPCWAW)	180d	17-Jun-13	13-Dec-13																							
MINED TUNNEL																										
CHT Protection Works @ location A, B, C	342d	27-Sep-10	01-Feb-12																							
Tunnel works from West Portal (access from TPCWAE& TZ5	418d	12-Mar-12	30-Oct-13																							
Tunnel Works from East Portal (Access from TS4 Area)	214d	30-Mar-12	01-Feb-13																							
Tunnel OHVD & Cable Trough	384d	02-Dec-13	22-May-15																							
TPCWAE																										
Drainage Diversion works along Hung Hing Road (Portion 19)	176d	15-Oct-10	24-Jun-11																							
Diaphragm Wall Construction	147d	20-May-11	13-Oct-11																							
Excavation & Lateral Support, ELS	421d	20-May-11	13-Jul-12																							
Rock Excavation	208d	12-Mar-12	03-Oct-12																							
AS Logistics Area for Mined Tunneling works	342d	12-May-12	18-Apr-13																							
Cut & Cover Tunnel Construction	130d	28-Jan-13	06-Jun-13																							
OHVD and Cable Trough (Access from TZ5/TPCWAW)	182d	18-Feb-15	18-Aug-15																							
TPCWAW & PORTION 11																										
Diaphragm Wall Construction + Portion 11	222d	25-Oct-13	03-Jun-14																							
Excavation & Lateral Support, ELS	478d	25-Oct-13	14-Feb-15																							
Cut & Cover Tunnel Construction	143d	30-Dec-14	21-May-15																							
OHVD and Cable Trough Installation (Access from Portion 11)	235d	22-May-15	11-Jan-16																							

- ◆ Milestone
- ◆ Milestone
- ▨ Remaining Work
- ▨ Critical Remaining Work
- ▨ Actual Work

2 of 2

China State Construction Engineering (Hong Kong) Ltd.
Contract No. HY/2009/15 - Central Wan Chai By Pass - Tunnel
(CBTS Section)

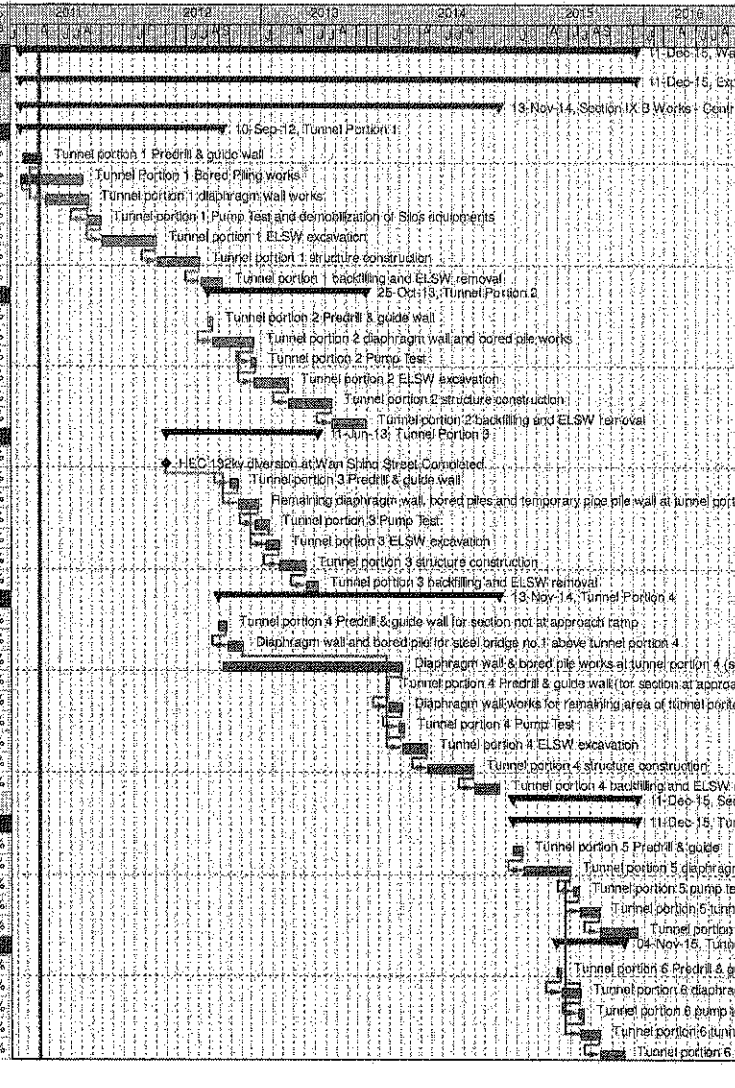
Prepared by William Caluza			
Date	Revision	Checked	Approved
14-Mar-11	Revision C	ST	KL
	File: 0001a		
	(Layout: HY/2009/15: CWB - Summary)		



Wan Chai Development Phase II - Central - Wan Chai
Bypass at Wan Chai East CONTRACT HK/2009/02

CHUN WO - CRGL JV

Activity ID	Activity Name	OD	Start	Finish	% Planned	2011	2012	2013	2014	2015	2016
Wan Chai Development Phase II - Central - Wan Chai Bypass at Wan Chai East											
Expanded and More Detailed Initial Works Programme											
Section IX B Works - Central - Wan Chai Bypass Tunnel Structure from chainage 3400 to eastern tunnel											
Tunnel Portion 1											
S9B-T1-0005	Tunnel portion 1 Predrill & guide wall	10	18-Feb-11	13-Apr-11	40%						
S9B-T1-0007	Tunnel Portion 1 Bored Piling works	105	09-Feb-11	08-Aug-11	0%						
S9B-T1-0010	Tunnel portion 1 diaphragm wall works	105	26-Apr-11	27-Aug-11	0%						
S9B-T1-0015	Tunnel portion 1 Pump Test and demobilization of Slos equipments	35	20-Aug-11	30-Sep-11	0%						
S9B-T1-0020	Tunnel portion 1 ELSW excavation	130	03-Oct-11	07-Mar-12	0%						
S9B-T1-0030	Tunnel portion 1 structure construction	100	09-Mar-12	09-Jul-12	0%						
S9B-T1-0040	Tunnel portion 1 backfilling and ELSW removal	54	10-Jul-12	10-Sep-12	0%						
Tunnel Portion 2											
S9B-T2-0105	Tunnel portion 2 Predrill & guide wall	10	02-Aug-12	13-Aug-12	0%						
S9B-T2-0010	Tunnel portion 2 diaphragm wall and bored pile works	100	14-Aug-12	10-Dec-12	0%						
S9B-T2-0015	Tunnel portion 2 Pump Test	14	03-Dec-12	18-Dec-12	0%						
S9B-T2-0020	Tunnel portion 2 ELSW excavation	80	11-Dec-12	19-Mar-13	0%						
S9B-T2-0030	Tunnel portion 2 structure construction	100	20-Mar-13	22-Jul-13	0%						
S9B-T2-0040	Tunnel portion 2 backfilling and ELSW removal	80	23-Jul-13	25-Oct-13	0%						
Tunnel Portion 3											
S9B-T3-0005	HEC 132kv diversion at Wan Shing Street Completed	0	01-Apr-12*		0%						
S9B-T3-0008	Tunnel portion 3 Predrill & guide wall	20	02-Oct-12	25-Oct-12	0%						
S9B-T3-0010	Remaining diaphragm wall, bored piles and temporary pipe pile wall at tunnel portion 3.	50	25-Oct-12	22-Dec-12	0%						
S9B-T3-0015	Tunnel portion 3 Pump Test	30	15-Dec-12	22-Jan-13	0%						
S9B-T3-0020	Tunnel portion 3 ELSW excavation	30	15-Jan-13	20-Feb-13	0%						
S9B-T3-0030	Tunnel portion 3 structure construction	80	21-Feb-13	06-May-13	0%						
S9B-T3-0040	Tunnel portion 3 backfilling and ELSW removal	30	07-May-13	11-Jun-13	0%						
Tunnel Portion 4											
S9B-T4-0005	Tunnel portion 4 Predrill & guide wall for section not at approach ramp	21	30-Aug-12	22-Sep-12	0%						
S9B-T4-0010	Diaphragm wall and bored pile for steel bridge no.1 above tunnel portion 4	40	24-Sep-12	10-Nov-12	0%						
S9B-T4-0020	Diaphragm wall & bored pile works at tunnel portion 4 (section not at approach ramp)	420	11-Sep-12	05-Feb-14	0%						
S9B-T4-0025	Tunnel portion 4 Predrill & guide wall (for section at approach ramp)	5	23-Dec-13	30-Dec-13	0%						
S9B-T4-0030	Diaphragm wall works for remaining area of tunnel portion 4 (for section at approach ramp)	30	31-Dec-13	06-Feb-14	0%						
S9B-T4-0035	Tunnel portion 4 Pump Test	14	28-Jan-14	14-Feb-14	0%						
S9B-T4-0040	Tunnel portion 4 ELSW excavation	60	07-Feb-14	19-Apr-14	0%						
S9B-T4-0050	Tunnel portion 4 structure construction	110	22-Apr-14	01-Sep-14	0%						
S9B-T4-0060	Tunnel portion 4 backfilling and ELSW removal	60	02-Sep-14	13-Nov-14	0%						
Section X Works - Central - Wan Chai Bypass Tunnel Structure from western tunnel to chainage 3400											
Tunnel Portion 5											
S10-T5-0005	Tunnel portion 5 Predrill & guide	21	23-Dec-14	19-Jan-15	0%						
S10-T5-0010	Tunnel portion 5 diaphragm wall & bored pile works	110	20-Jan-15	04-Jun-15	0%						
S10-T5-0015	Tunnel portion 5 pump test	14	13-Jun-15	30-Jun-15	0%						
S10-T5-0020	Tunnel portion 5 tunnel ELSW excavation	45	04-Jul-15	25-Aug-15	0%						
S10-T5-0030	Tunnel portion 5 tunnel structure construction	90	26-Aug-15	11-Dec-15	0%						
Tunnel Portion 6											
S10-T6-0040	Tunnel portion 6 Predrill & guide	12	24-Apr-15	08-May-15	0%						
S10-T6-0050	Tunnel portion 6 diaphragm wall & bored pile works at Area 10	45	09-May-15	09-Jul-15	0%						
S10-T6-0055	Tunnel portion 6 pump test	14	25-Jun-15	11-Jul-15	0%						
S10-T6-0060	Tunnel portion 6 tunnel ELSW excavation at Area 10	45	04-Jul-15	26-Aug-15	0%						
S10-T6-0070	Tunnel portion 6 tunnel structure construction at Area 10	58	26-Aug-15	04-Nov-15	0%						



CEDD CONTRACT NO. HK/2009/02
 Wan Chai Development Phase II - Central Wan Chai Bypass at Wan Chai East (Contract 2)
 Revised Programme dated 7 April 2011

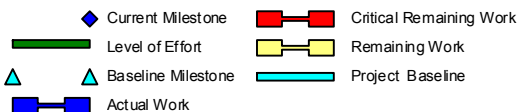
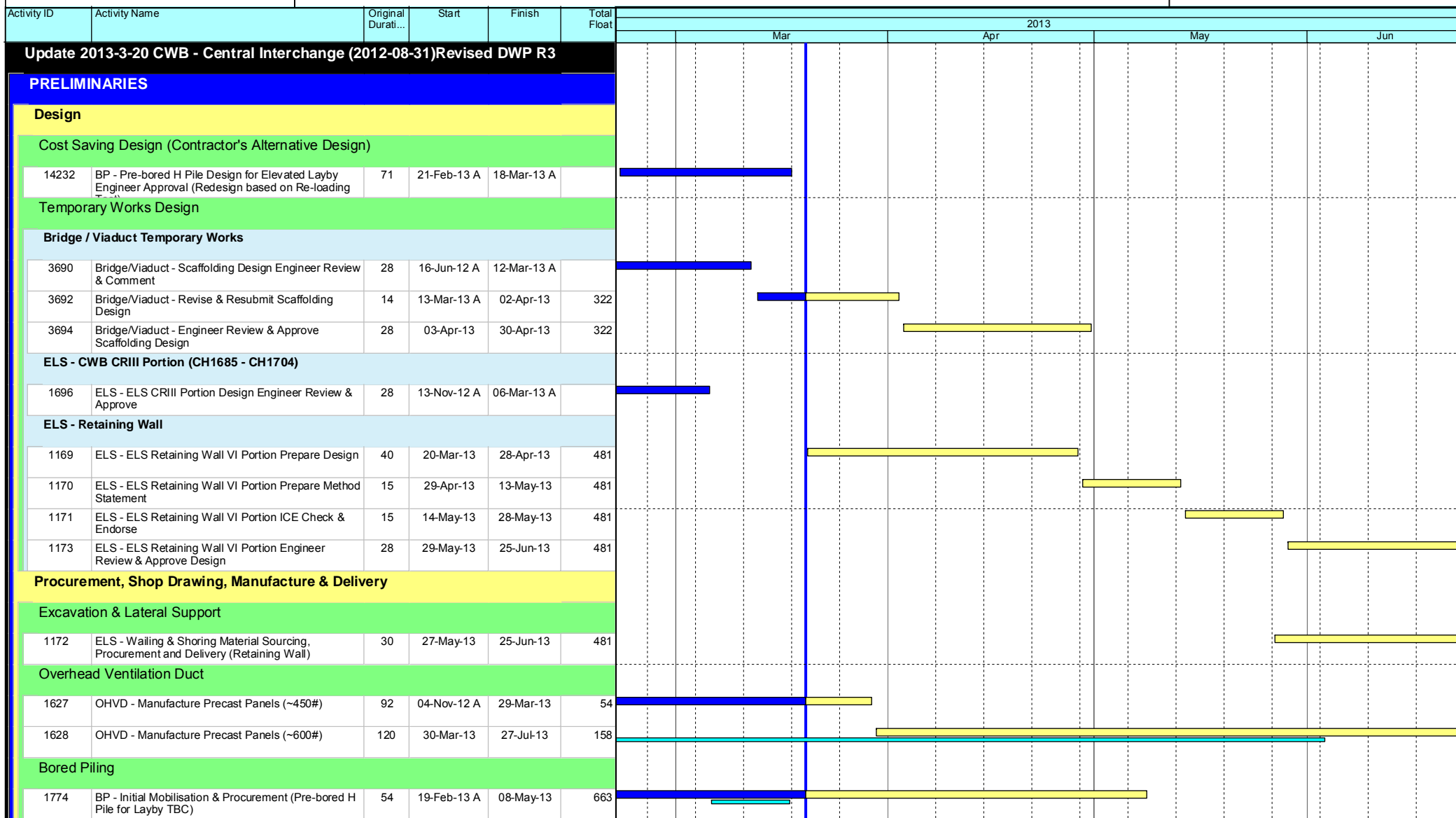
Date	Revision	Checked	Approved
07-Apr-11		KT	KY

Page 10 of 11

HY/2009/18 Central - Wan Chai Bypass (Central Interchange)



TASK filters: 3 Months, Not HL.



Leighton Contractors (Asia) Limited Programme Update 30 (Mar 2013) THREE MONTH ROLLING

Project ID: U030
 Baseline: DCP4-4
 Layout: Update Three Month Rolling U029
 Page 1 of 7

Date	Revision	Checked	Approv...
21-Mar-13	U030	EC	RW
21-Feb-13	U029	EC	RW

HY/2009/18 Central - Wan Chai Bypass (Central Interchange)



TASK filters: 3 Months, Not HL.

Activity ID	Activity Name	Original Durati...	Start	Finish	Total Float	2013											
						Mar			Apr			May			Jun		
						1	2	3	1	2	3	1	2	3	1	2	3
Post-tensioning																	
3835	PT - Initial Mobilisation & Procurement	45	20-Feb-13 A	02-May-13	319												
1137	PT - Prepare & Submit Post-tensioning Method Statement	15	21-Mar-13	04-Apr-13	319												
1141	PT - Post-tensioning Method Statement Engineer Review & Approval	28	05-Apr-13	02-May-13	319												
Bridge Bearings																	
3845	BEAR - Procure & Fabricate Bridge Bearings	30	15-Nov-12 A	08-May-13	324												
1142	BEAR - Prepare & Submit Bearing & Plinth Method Statement	28	20-Mar-13	16-Apr-13	443												
1143	BEAR - Bearing & Plinth Method Statement Engineer Review & Approval	28	17-Apr-13	14-May-13	443												
3846	BEAR - Delivery of Bearings	7	09-May-13	15-May-13	324												
Establishment, Mobilisation & Advanced Works																	
Instrumentation and Monitoring																	
3012	INS - Portion VI Install Instrumentation	54	13-Nov-12 A	19-Mar-13 A													
1402	INS - Portion VI Initial Reading	30	04-Mar-13 A	19-Apr-13	430												
SECTION 3A - ALL TUNNEL WORKS IN PORTION IIIB																	
CWB Tunnel - CH1704 to CH1825																	
CWB Tunnel Internal Works																	
1720	1704-1825 - Prepare CJ (substantial completed)	40	21-Dec-12 A	08-Mar-13 A													
CWB Tunnel - CH1685 to CH1704																	
CWB Tunnel Structure																	
1721	1685-1704 - Excavate to 2nd Layer (East)	8	06-Feb-13 A	22-Mar-13	60												
1719	1685-1704 - Erect 2nd Layer Strut (East)	8	23-Mar-13	05-Apr-13	60												
1722	1685-1704 - Excavate to 3rd Layer (East)	5	06-Apr-13	11-Apr-13	60												
1723	1685-1704 - Erect 3rd Layer Strut (East)	10	12-Apr-13	23-Apr-13	60												
1724	1685-1704 - Excavate to Formation Layer (East)	5	24-Apr-13	29-Apr-13	60												
1726	1685-1704 - Construct CWB Tunnel Base Slab & Waterproofing (Bay 12)	23	30-Apr-13	28-May-13	60												

- Current Milestone
- Critical Remaining Work
- Level of Effort
- Remaining Work
- Baseline Milestone
- Project Baseline
- Actual Work

Leighton Contractors (Asia) Limited Programme Update 30 (Mar 2013) THREE MONTH ROLLING

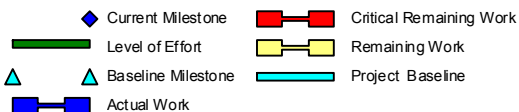
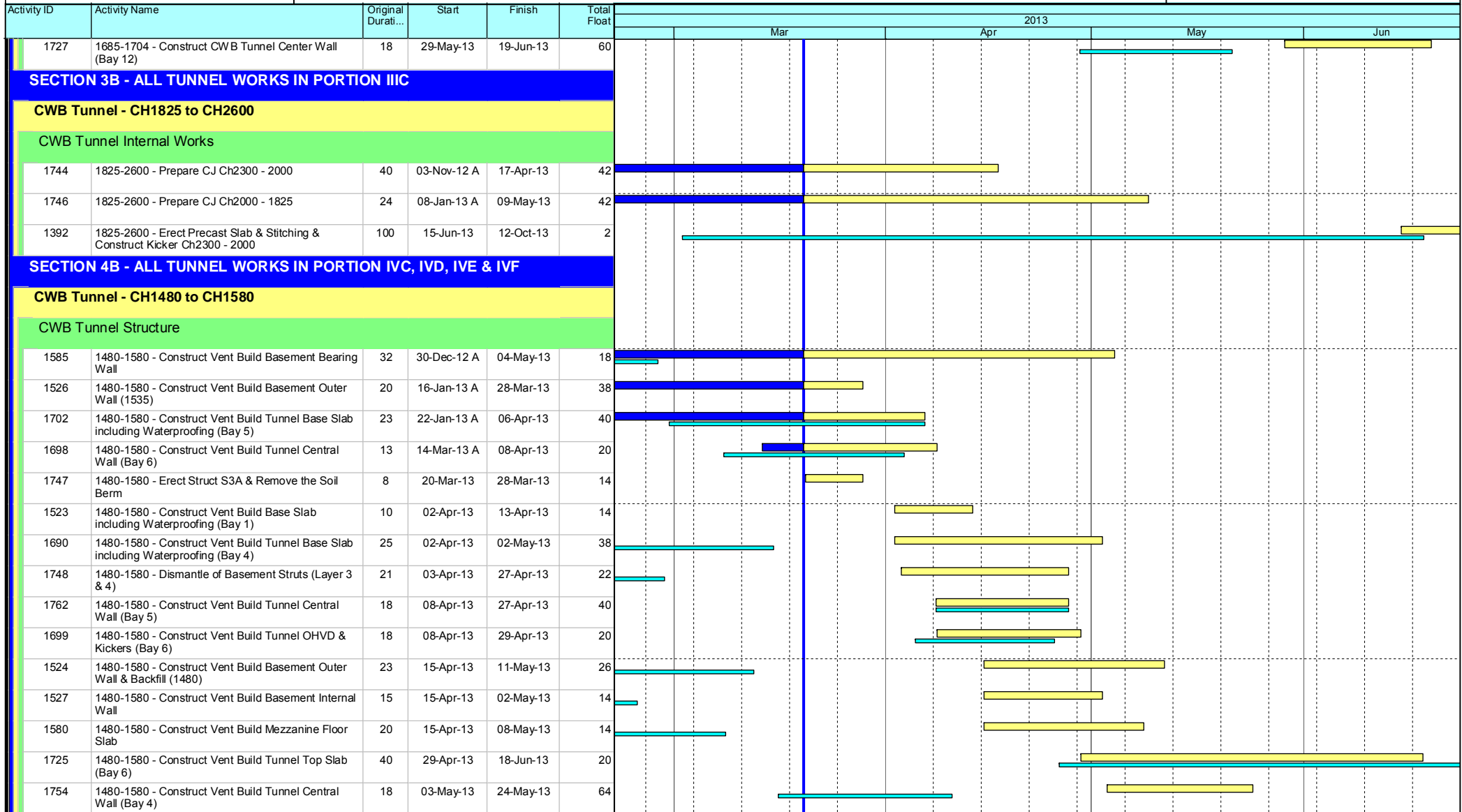
Project ID: U030
 Baseline: DCP4-4
 Layout: Update Three Month Rolling U029
 Page 2 of 7

Date	Revision	Checked	Approv...
21-Mar-13	U030	EC	RW
21-Feb-13	U029	EC	RW

HY/2009/18 Central - Wan Chai Bypass (Central Interchange)



TASK filters: 3 Months, Not HL.



Leighton Contractors (Asia) Limited Programme Update 30 (Mar 2013) THREE MONTH ROLLING

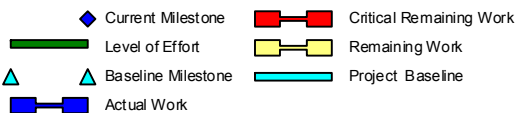
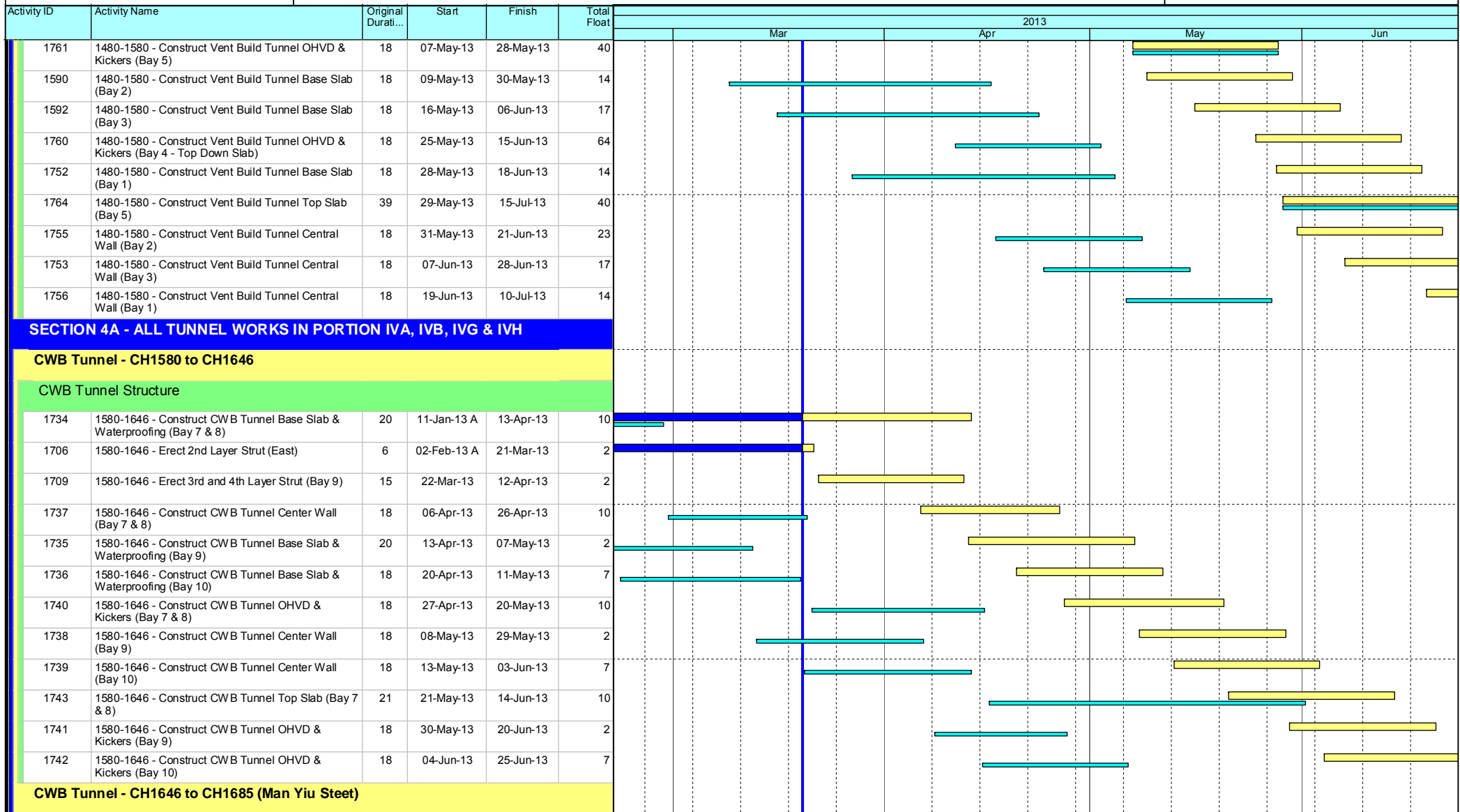
Project ID: U030
 Baseline: DCP4-4
 Layout: Update Three Month Rolling U029
 Page 3 of 7

Date	Revision	Checked	Approv...
21-Mar-13	U030	EC	RW
21-Feb-13	U029	EC	RW

HY/2009/18 Central - Wan Chai Bypass (Central Interchange)



TASK filters: 3 Months, Not HL.



Leighton Contractors (Asia) Limited Programme Update 30 (Mar 2013) THREE MONTH ROLLING

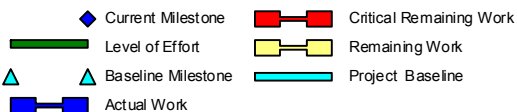
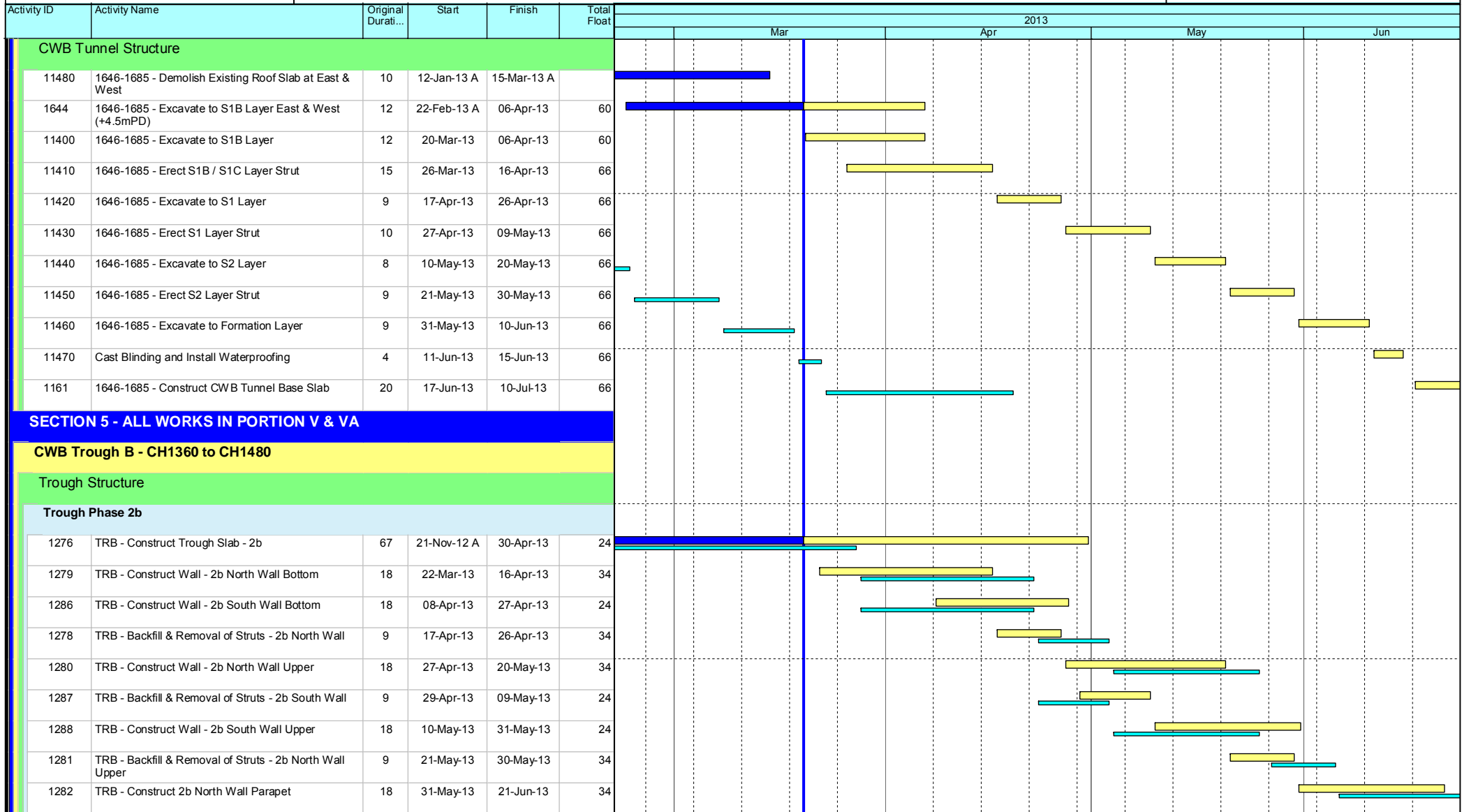
Project ID: U030
 Baseline: DCP4-4
 Layout: Update Three Month Rolling U029
 Page 4 of 7

Date	Revision	Checked	Approv...
21-Mar-13	U030	EC	RW
21-Feb-13	U029	EC	RW

HY/2009/18 Central - Wan Chai Bypass (Central Interchange)



TASK filters: 3 Months, Not HL.



Leighton Contractors (Asia) Limited Programme Update 30 (Mar 2013) THREE MONTH ROLLING

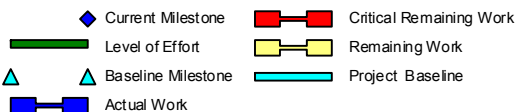
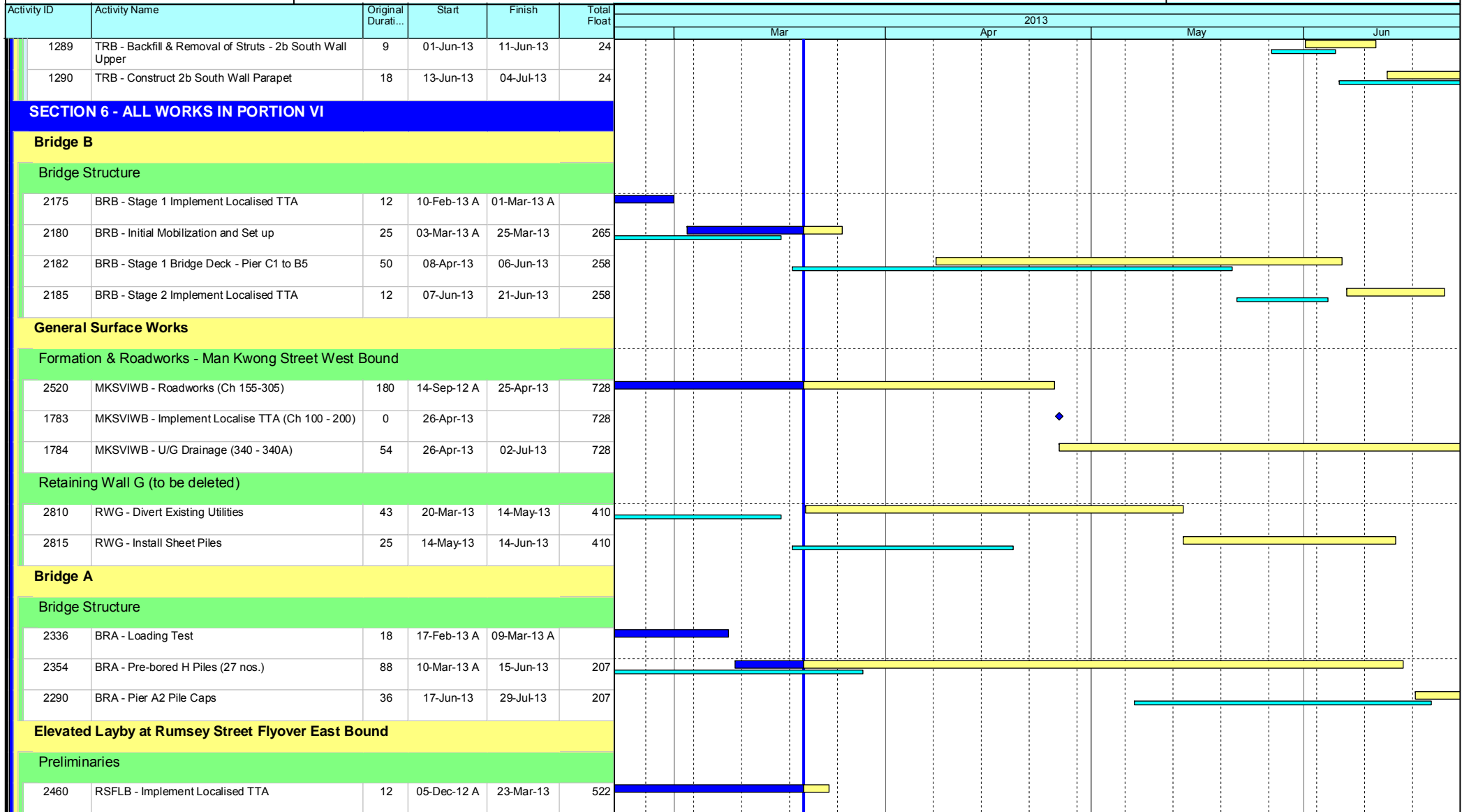
Project ID: U030
 Baseline: DCP4-4
 Layout: Update Three Month Rolling U029
 Page 5 of 7

Date	Revision	Checked	Approv...
21-Mar-13	U030	EC	RW
21-Feb-13	U029	EC	RW

HY/2009/18 Central - Wan Chai Bypass (Central Interchange)



TASK filters: 3 Months, Not HL.



Leighton Contractors (Asia) Limited Programme Update 30 (Mar 2013) THREE MONTH ROLLING

Project ID: U030
Baseline: DCP4-4
Layout: Update Three Month Rolling U029
Page 6 of 7

Date	Revision	Checked	Approv...
21-Mar-13	U030	EC	RW
21-Feb-13	U029	EC	RW

Data Date: 20-Mar-13

HY/2009/18 Central - Wan Chai Bypass (Central Interchange)



TASK filters: 3 Months, Not HL.

Activity ID	Activity Name	Original Durati...	Start	Finish	Total Float	2013			
						Mar	Apr	May	Jun
2580	RSFLB - Site Clearance & Hoarding	12	20-Mar-13	06-Apr-13	522	[Gantt bar: Mar 20 - Apr 6]			
1113	RSFLB - Tree Transplantation	22	25-Mar-13	23-Apr-13	1109	[Gantt bar: Mar 25 - Apr 23]			
1630	RSFLB - Divert Any Utilities	26	27-Apr-13	30-May-13	522	[Gantt bar: Apr 27 - May 30]			
Bridge Structure									
2590	RSFLB - Pier E1/E2 Site Investigation with Report	60	22-Jan-13 A	27-Apr-13	522	[Gantt bar: Jan 22 - Apr 27]			
2720	RSFLB - Pier E1/E2 Prebored H-Piles (2 nos.)	30	30-May-13	06-Jul-13	522	[Gantt bar: May 30 - Jul 6]			

- ◆ Current Milestone
- Critical Remaining Work
- ▬ Level of Effort
- ▬ Remaining Work
- ▲ Baseline Milestone
- ▬ Project Baseline
- ▬ Actual Work

Leighton Contractors (Asia) Limited Programme Update 30 (Mar 2013) THREE MONTH ROLLING

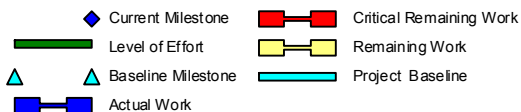
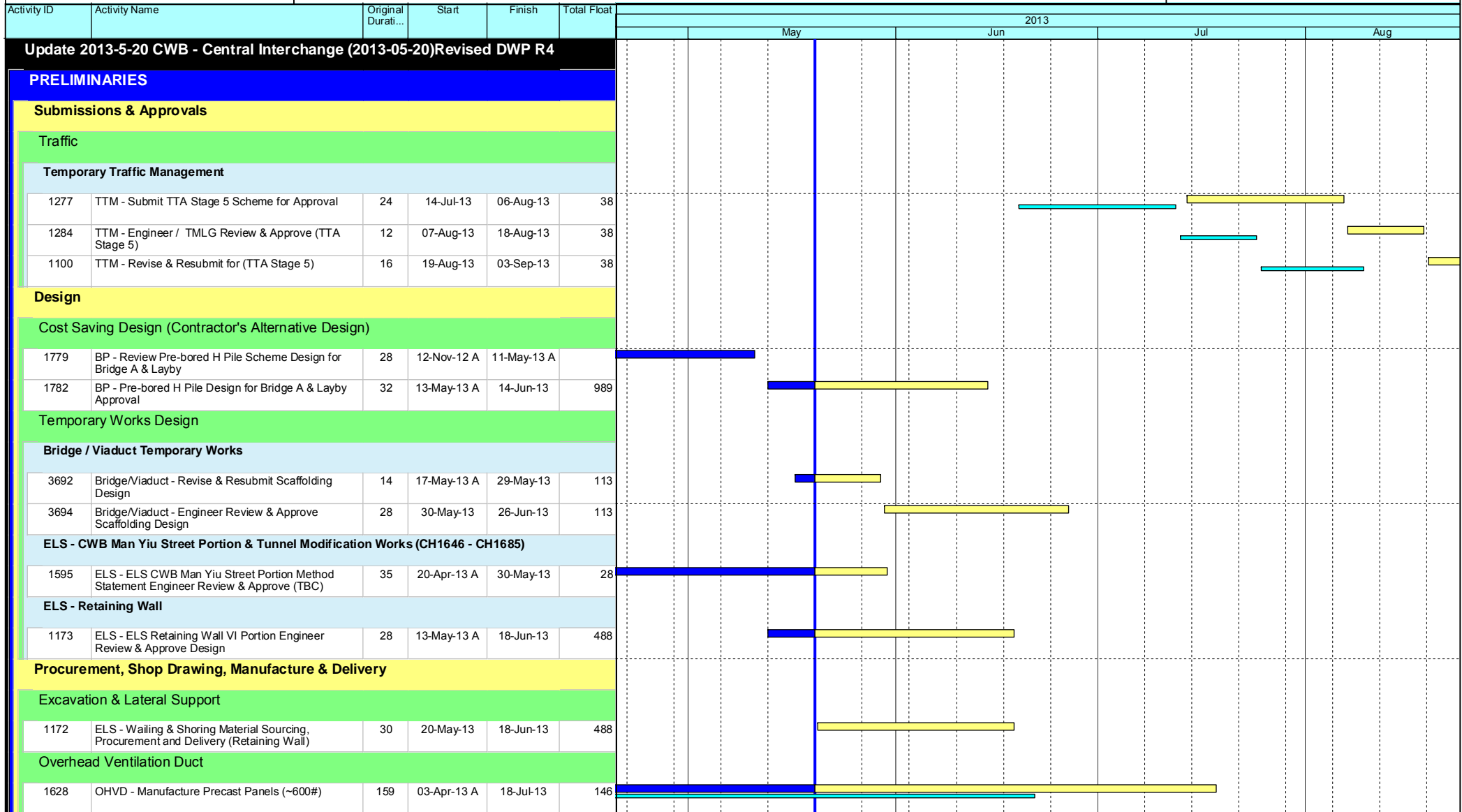
Project ID: U030
 Baseline: DCP4-4
 Layout: Update Three Month Rolling U029
 Page 7 of 7

Date	Revision	Checked	Approv...
21-Mar-13	U030	EC	RW
21-Feb-13	U029	EC	RW

Data Date: 20-May-13

HY/2009/18 Central - Wan Chai Bypass (Central Interchange)

TASK filters: 3 Months_1, Not HL.



Leighton Contractors (Asia) Limited Programme Update 32 (May 2013) THREE MONTH ROLLING

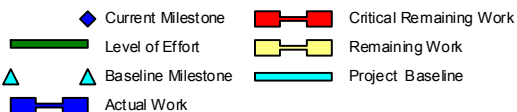
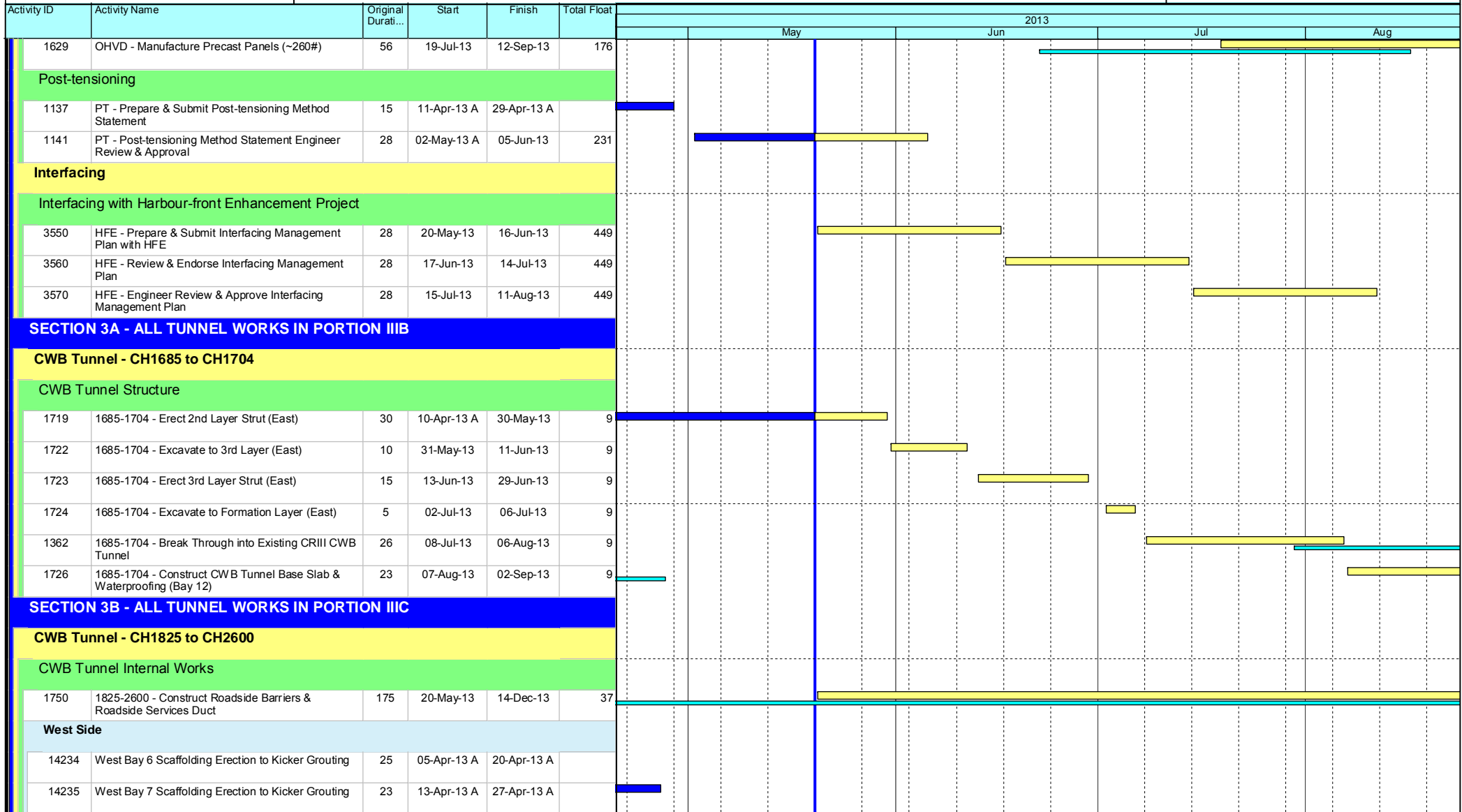
Project ID: U032
Baseline: DCP4-4
Layout: Update Three Month Rolling U032
Page 1 of 9

Date	Revision	Checked	Approv...
21-May-13	U032	EC	RW
21-Apr-13	U031	EC	RW

Data Date: 20-May-13

HY/2009/18 Central - Wan Chai Bypass (Central Interchange)

TASK filters: 3 Months_1, Not HL.



Leighton Contractors (Asia) Limited Programme Update 32 (May 2013) THREE MONTH ROLLING

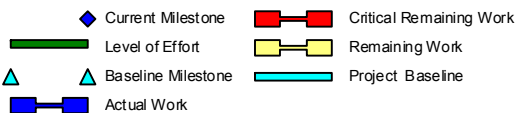
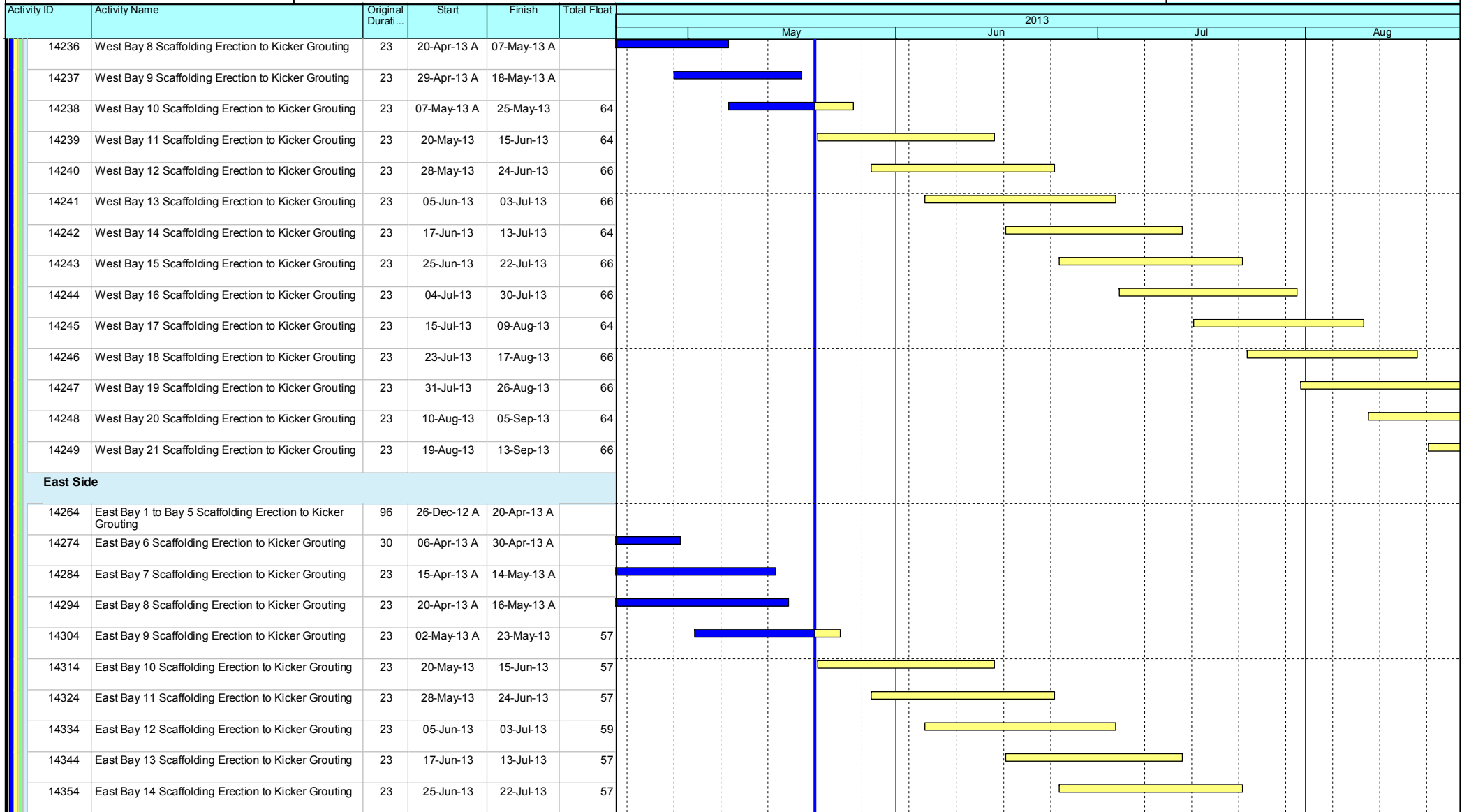
Project ID: U032
Baseline: DCP4-4
Layout: Update Three Month Rolling U032
Page 2 of 9

Date	Revision	Checked	Approv...
21-May-13	U032	EC	RW
21-Apr-13	U031	EC	RW

HY/2009/18 Central - Wan Chai Bypass (Central Interchange)



TASK filters: 3 Months_1, Not HL.



Leighton Contractors (Asia) Limited Programme Update 32 (May 2013) THREE MONTH ROLLING

Project ID: U032
 Baseline: DCP4-4
 Layout: Update Three Month Rolling U032
 Page 3 of 9

Date	Revision	Checked	Approv...
21-May-13	U032	EC	RW
21-Apr-13	U031	EC	RW

HY/2009/18 Central - Wan Chai Bypass (Central Interchange)



TASK filters: 3 Months_1, Not HL.

Activity ID	Activity Name	Original Durati...	Start	Finish	Total Float	2013			
						May	Jun	Jul	Aug
14364	East Bay 15 Scaffolding Erection to Kicker Grouting	23	04-Jul-13	30-Jul-13	59				
14374	East Bay 16 Scaffolding Erection to Kicker Grouting	23	15-Jul-13	09-Aug-13	57				
14384	East Bay 17 Scaffolding Erection to Kicker Grouting	23	23-Jul-13	17-Aug-13	57				
14394	East Bay 18 Scaffolding Erection to Kicker Grouting	23	31-Jul-13	26-Aug-13	59				
14404	East Bay 19 Scaffolding Erection to Kicker Grouting	23	10-Aug-13	05-Sep-13	57				
14414	East Bay 20 Scaffolding Erection to Kicker Grouting	23	19-Aug-13	13-Sep-13	57				

SECTION 4B - ALL TUNNEL WORKS IN PORTION IVC, IVD, IVE & IVF

CWB Tunnel - CH1480 to CH1580

CWB Tunnel Structure

Tunnel Structure

Bay 1

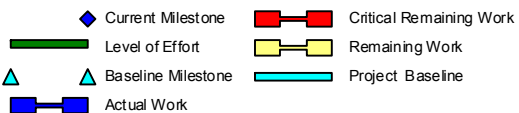
1523	1480-1580 - Construct Vent Build Base Slab including Waterproofing (Bay 1)	16	14-Apr-13 A	29-May-13	22				
1524	1480-1580 - Construct Vent Build Basement Outer Wall & Backfill (1480)	25	30-May-13	28-Jun-13	22				
1527	1480-1580 - Construct Vent Build Basement Internal Wall	25	30-May-13	28-Jun-13	22				
1752	1480-1580 - Construct Vent Build Tunnel Base Slab (Bay 1)	18	29-Jun-13	20-Jul-13	22				
1756	1480-1580 - Construct Vent Build Tunnel Central Wall (Bay 1)	18	22-Jul-13	10-Aug-13	22				
1759	1480-1580 - Construct Vent Build Tunnel Top Slab (Bay 1)	18	12-Aug-13	31-Aug-13	22				

Bay 2

1590	1480-1580 - Construct Vent Build Tunnel Base Slab (Bay 2)	30	20-May-13	24-Jun-13	38				
1755	1480-1580 - Construct Vent Build Tunnel Central Wall (Bay 2)	18	25-Jun-13	16-Jul-13	38				
1765	1480-1580 - Construct Vent Build Tunnel Top Slab (Bay 1)	24	14-Aug-13	10-Sep-13	14				

Bay 3

1592	1480-1580 - Construct Vent Build Tunnel Base Slab (Bay 3)	25	11-May-13 A	30-May-13	36				
1753	1480-1580 - Construct Vent Build Tunnel Central Wall (Bay 3)	22	31-May-13	26-Jun-13	36				
14522	1480-1580 - Construct Vent Build Tunnel Top Slab (Bay 2)	24	13-Jul-13	09-Aug-13	23				



Leighton Contractors (Asia) Limited Programme Update 32 (May 2013) THREE MONTH ROLLING

Project ID: U032
 Baseline: DCP4-4
 Layout: Update Three Month Rolling U032
 Page 4 of 9

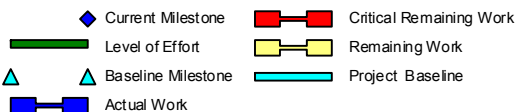
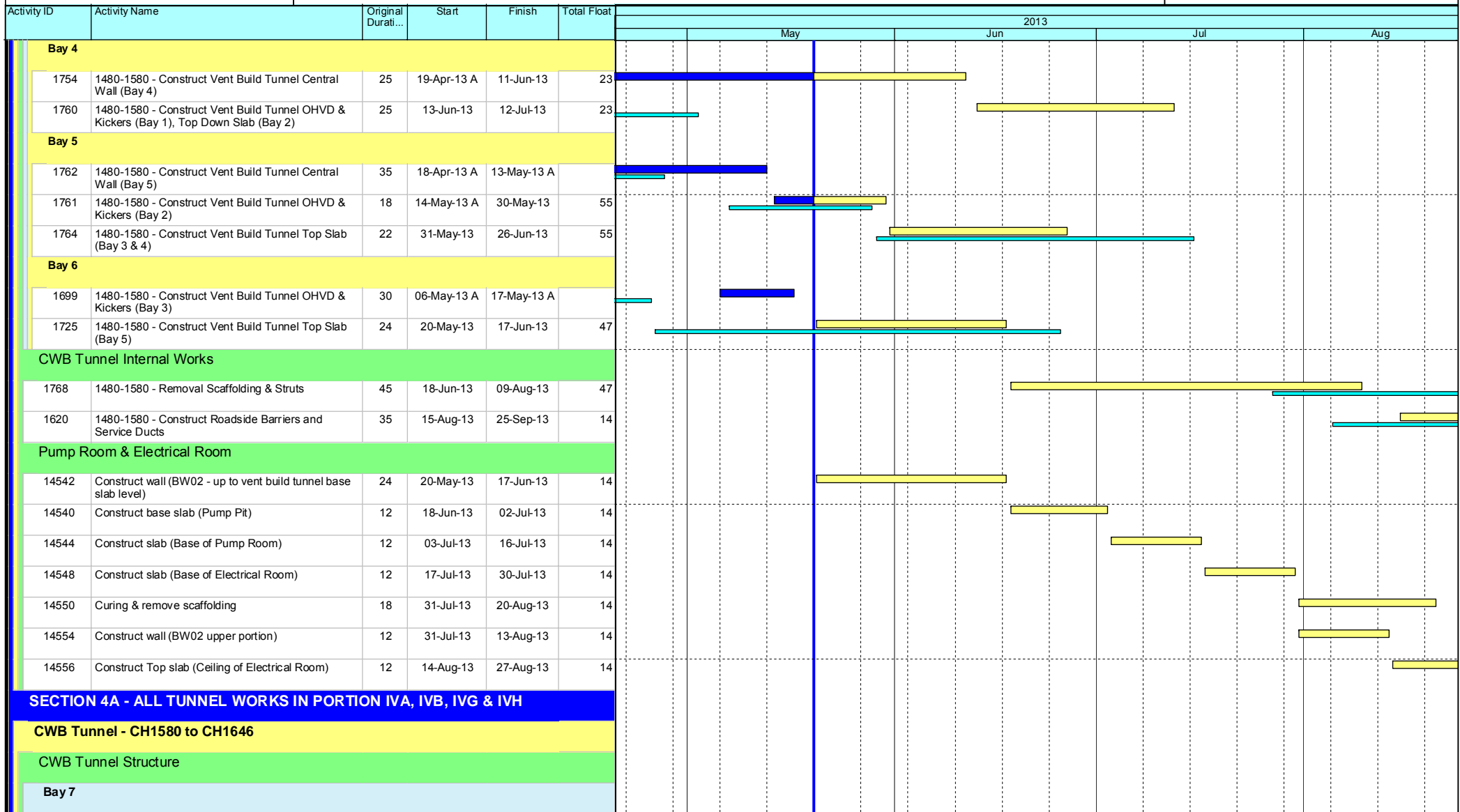
Date	Revision	Checked	Approv...
21-May-13	U032	EC	RW
21-Apr-13	U031	EC	RW

Data Date: 20-May-13

HY/2009/18 Central - Wan Chai Bypass (Central Interchange)



TASK filters: 3 Months_1, Not HL.



Leighton Contractors (Asia) Limited Programme Update 32 (May 2013) THREE MONTH ROLLING

Project ID: U032
 Baseline: DCP4-4
 Layout: Update Three Month Rolling U032
 Page 5 of 9

Date	Revision	Checked	Approv...
21-May-13	U032	EC	RW
21-Apr-13	U031	EC	RW

HY/2009/18 Central - Wan Chai Bypass (Central Interchange)



TASK filters: 3 Months_1, Not HL.

Activity ID	Activity Name	Original Durati...	Start	Finish	Total Float	2013			
						May	Jun	Jul	Aug
1740	1580-1646 - Construct CWB Tunnel OHVD & Kickers (Bay 4)	25	07-Apr-13 A	15-May-13 A					
1743	1580-1646 - Construct CWB Tunnel Top Slab (Bay 6)	18	16-May-13 A	30-May-13	48				
Bay 8									
14524	1580-1646 - Construct CWB Tunnel Base Slab & Waterproofing (Bay 7 & 8)	20	22-Mar-13 A	30-Apr-13 A					
14574	1580-1646 - Construct CWB Tunnel Center Wall (Bay 7 & 8)	18	02-May-13 A	28-May-13	37				
14523	1580-1646 - Construct CWB Tunnel OHVD & Kickers (Bay 5)	25	28-May-13	22-Jun-13	37				
14590	1580-1646 - Construct CWB Tunnel Top Slab (Bay 7)	18	22-Jun-13	13-Jul-13	30				
Bay 9									
1709	1580-1646 - Erect 3rd and 4th Layer Strut (Bay 9)	24	24-Mar-13 A	22-Apr-13 A					
1735	1580-1646 - Construct CWB Tunnel Base Slab & Waterproofing (Bay 9)	21	23-Apr-13 A	14-May-13 A					
1738	1580-1646 - Construct CWB Tunnel Center Wall (Bay 9)	21	15-May-13 A	28-May-13	44				
1741	1580-1646 - Construct CWB Tunnel OHVD & Kickers (Bay 6)	18	29-May-13	19-Jun-13	44				
1329	1580-1646 - Construct CWB Tunnel Top Slab (Bay 8)	18	08-Jul-13	27-Jul-13	30				
Bay 10									
1736	1580-1646 - Construct CWB Tunnel Base Slab & Waterproofing (Bay 10)	21	30-Apr-13 A	18-May-13 A					
1739	1580-1646 - Construct CWB Tunnel Center Wall (Bay 10)	21	20-May-13	13-Jun-13	31				
1742	1580-1646 - Construct CWB Tunnel OHVD & Kickers (Bay 7)	18	14-Jun-13	05-Jul-13	31				
1745	1580-1646 - Construct CWB Tunnel Top Slab (Bay 9)	18	06-Jul-13	26-Jul-13	31				
CWB Tunnel Internal Works									
1769	1580-1646 - Removal of Scaffolding and Struts	45	03-Jul-13	23-Aug-13	210				
1730	1580-1646 - Construct Roadside Barriers and Service Ducts	45	29-Jul-13	18-Sep-13	194				
CWB Tunnel - CH1646 to CH1685 (Man Yiu Steet)									
CWB Tunnel Structure									
11420	1646-1685 - Excavate to S1 Layer	9	06-Apr-13 A	20-Apr-13 A					
11430	1646-1685 - Erect S1 Layer Strut	22	17-Apr-13 A	08-May-13 A					

- Current Milestone
- Critical Remaining Work
- Level of Effort
- Remaining Work
- Baseline Milestone
- Project Baseline
- Actual Work

Leighton Contractors (Asia) Limited Programme Update 32 (May 2013) THREE MONTH ROLLING

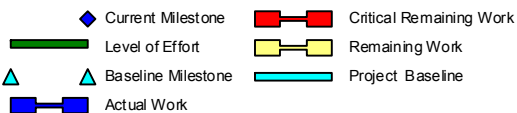
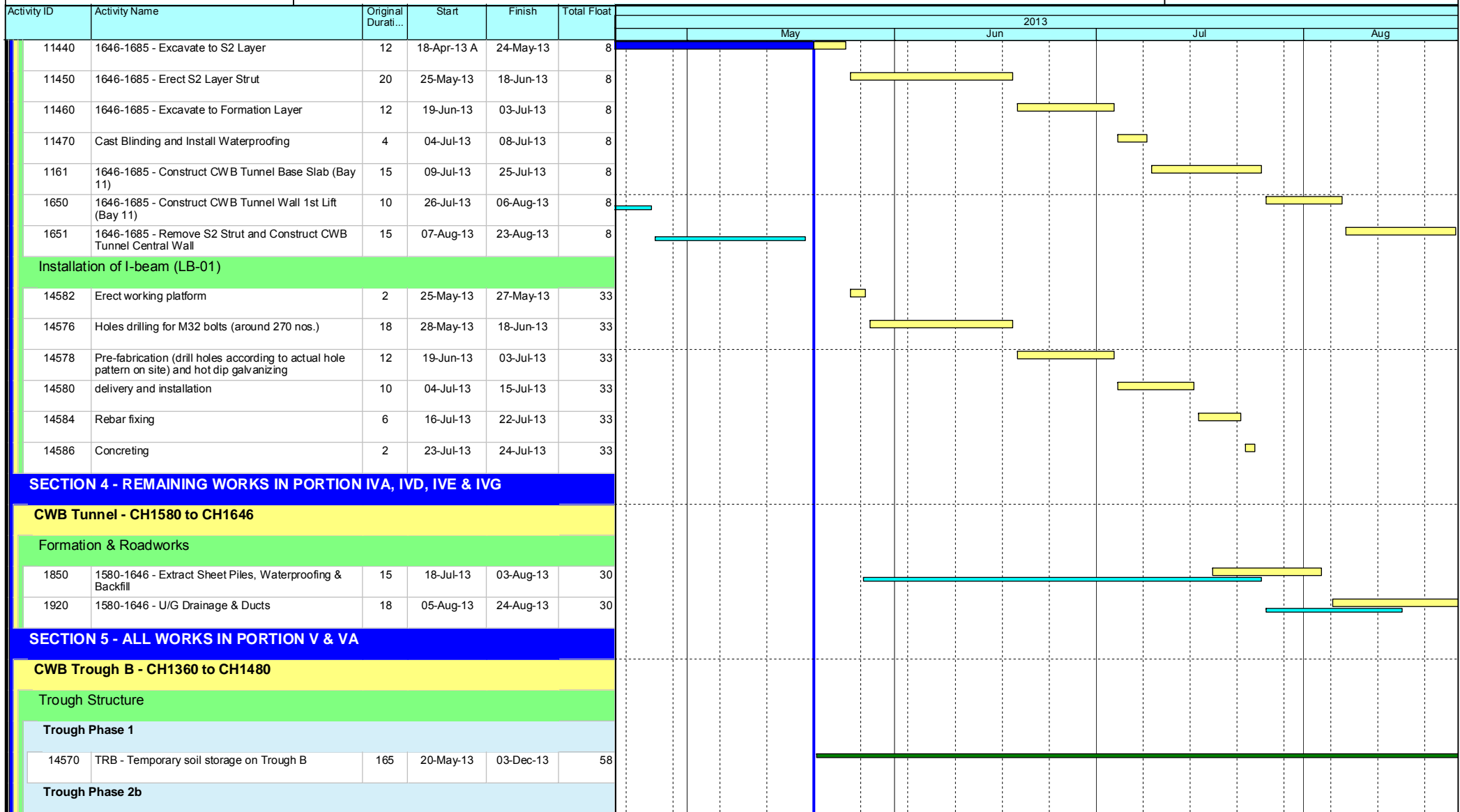
Project ID: U032
 Baseline: DCP4-4
 Layout: Update Three Month Rolling U032
 Page 6 of 9

Date	Revision	Checked	Approv...
21-May-13	U032	EC	RW
21-Apr-13	U031	EC	RW

HY/2009/18 Central - Wan Chai Bypass (Central Interchange)



TASK filters: 3 Months_1, Not HL.



Leighton Contractors (Asia) Limited Programme Update 32 (May 2013) THREE MONTH ROLLING

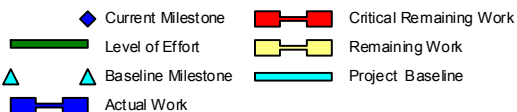
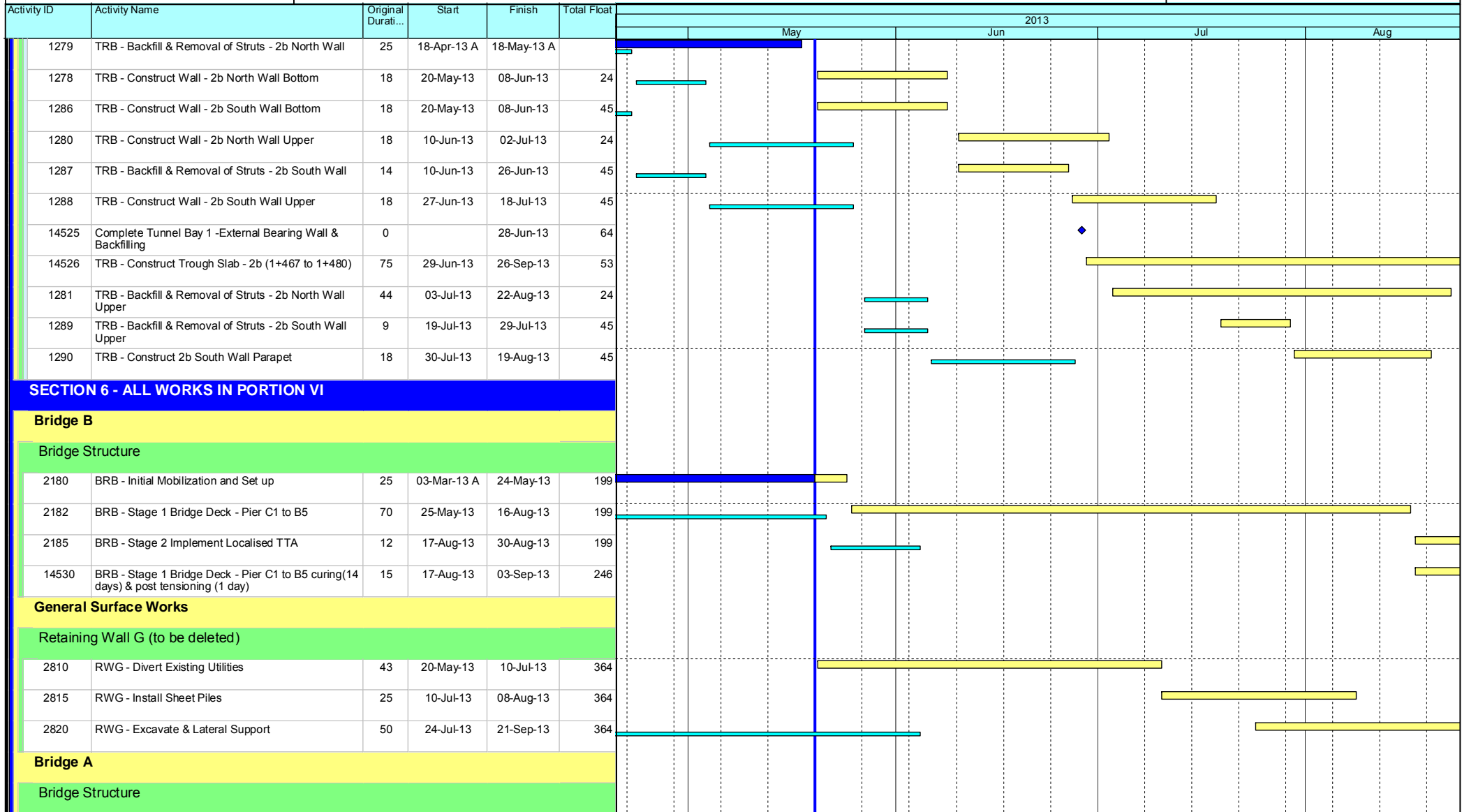
Project ID: U032
 Baseline: DCP4-4
 Layout: Update Three Month Rolling U032
 Page 7 of 9

Date	Revision	Checked	Approv...
21-May-13	U032	EC	RW
21-Apr-13	U031	EC	RW

HY/2009/18 Central - Wan Chai Bypass (Central Interchange)



TASK filters: 3 Months_1, Not HL.



Leighton Contractors (Asia) Limited Programme Update 32 (May 2013) THREE MONTH ROLLING

Project ID: U032
 Baseline: DCP4-4
 Layout: Update Three Month Rolling U032
 Page 8 of 9

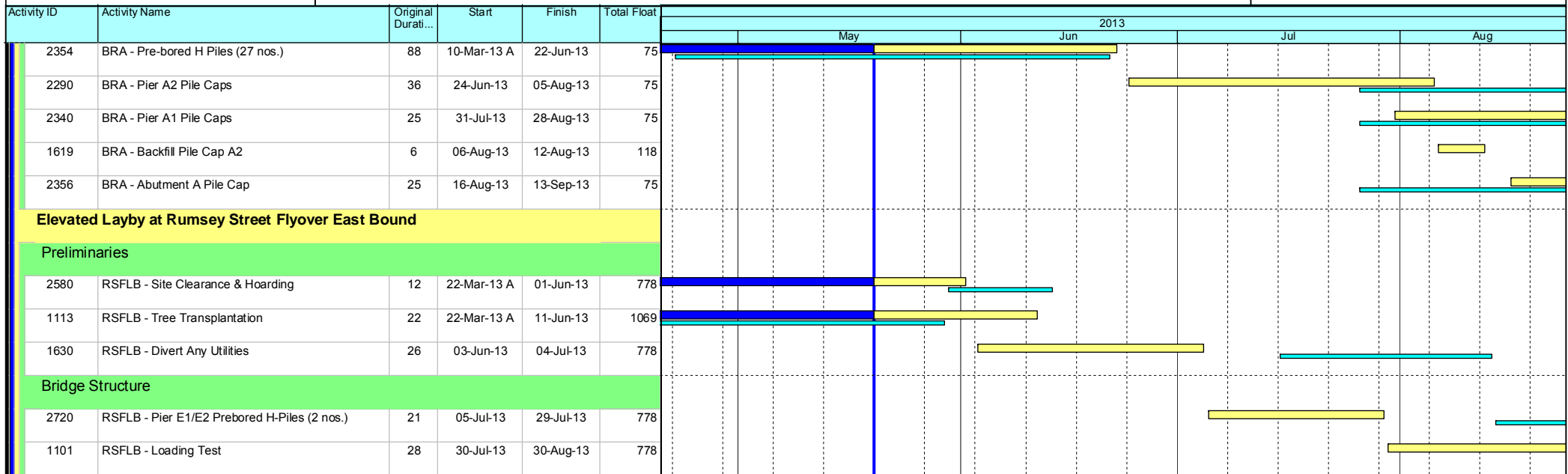
Date	Revision	Checked	Approv...
21-May-13	U032	EC	RW
21-Apr-13	U031	EC	RW

Data Date: 20-May-13

HY/2009/18 Central - Wan Chai Bypass (Central Interchange)



TASK filters: 3 Months_1, Not HL.



- ◆ Current Milestone
- Critical Remaining Work
- ▬ Level of Effort
- ▬ Remaining Work
- ▲ Baseline Milestone
- ▬ Project Baseline
- ▬ Actual Work

Leighton Contractors (Asia) Limited Programme Update 32 (May 2013) THREE MONTH ROLLING

Project ID: U032
 Baseline: DCP4-4
 Layout: Update Three Month Rolling U032
 Page 9 of 9

Date	Revision	Checked	Approv...
21-May-13	U032	EC	RW
21-Apr-13	U031	EC	RW

Activity ID	HY19 Print Sequenc	Activity Name	Rem Dur	Start	Finish	2013																							
						March						April						May						June					
						18	25	04	11	18	25	01	08	15	22	29	06	13	20	27	03	10	17						
3MRP - Mar 2013 to Jun 2013																													
02 - PRE-CONSTRUCTION WORKS																													
02.2 - Contractor's Submission																													
0220-1360	3	Tunnel Structures Materials - Submission	7	19-Jul-12 A	26-Mar-13	Tunnel Structures Materials - Submission																							
0220-1370	3	Tunnel Structures Materials - ER Review/Comment	7	14-Jan-13 A	02-Apr-13	Tunnel Structures Materials - ER Review/Comment																							
0220-1380	3	Tunnel Structures Materials - Resubmission	7	28-Jan-13 A	09-Apr-13	Tunnel Structures Materials - Resubmission																							
0220-1390	3	Tunnel Structures Materials - ER Approval	14	15-Mar-13 A	23-Apr-13	Tunnel Structures Materials - ER Approval																							
0220-1400	3	Tunnel Structures Materials - Procurement & Delivery	60	24-Apr-13	22-Jun-13	Tunnel Structures Materials - Procurement & Delivery																							
0220-1500		Bridge Bearing - Procurement & Delivery (D8/D9/D10)	0	24-Sep-12 A	20-Feb-13 A	Bridge Bearing - Procurement & Delivery (D8/D9/D10)																							
02.3 - Method Statement / Shop Drawings																													
0230-1290	2	MS Cut & Cover Tunnel ELS - ER Approval	0	07-Aug-12 A	28-Feb-13 A	MS Cut & Cover Tunnel ELS - ER Approval																							
0230-1360	3	MS Pre-cast Segment Launching by LG- Resubmission	8	21-Jan-13 A	27-Mar-13	MS Pre-cast Segment Launching by LG- Resubmission																							
0230-1370	3	MS Pre-cast Segment Launching by LG - ER Approval	28	28-Feb-13 A	24-Apr-13	MS Pre-cast Segment Launching by LG - ER Approval																							
0230-1375	31	MS Pre-cast Pier Segment Erection by Crane - Resubmission	0	21-Jan-13 A	27-Feb-13 A	MS Pre-cast Pier Segment Erection by Crane - Resubmission																							
0230-1378	31	MS Pre-cast Pier Segment Erection by Crane - ER Approval	0	28-Feb-13 A	08-Mar-13 A	MS Pre-cast Pier Segment Erection by Crane - ER Approval																							
0230-1490	4	MS Stressing Tendons - ER Approval	12	11-Feb-13 A	31-Mar-13	MS Stressing Tendons - ER Approval																							
0230-1700	6	MS Temporary Bridge TA1 - Submission	24	01-Apr-13	24-Apr-13	MS Temporary Bridge TA1 - Submission																							
0230-1710	6	MS Temporary Bridge TA1 - ER Review & Comment	28	25-Apr-13	22-May-13	MS Temporary Bridge TA1 - ER Review & Comment																							
0230-1720	6	MS Temporary Bridge TA1 - Resubmission	12	23-May-13	03-Jun-13	MS Temporary Bridge TA1 - Resubmission																							
0230-1730	6	MS Temporary Bridge TA - ER Approval	28	04-Jun-13	01-Jul-13	MS Temporary Bridge TA - ER Approval																							
0230-1330	7	MS Pre-casting Beam - ER Approval	0	11-Feb-13 A	19-Mar-13 A	MS Pre-casting Beam - ER Approval																							
0230-1860	8	MS Marine Pier Crosshead Construction - Submission	3	20-Feb-13 A	22-Mar-13	MS Marine Pier Crosshead Construction - Submission																							
0230-1870	8	MS Marine Pier Crosshead Construction - ER Review & Comment	3	04-Mar-13 A	22-Mar-13	MS Marine Pier Crosshead Construction - ER Review & Comment																							
0230-1890	8	MS Marine Pier Crosshead Construction - ER Approval	12	23-Mar-13	03-Apr-13	MS Marine Pier Crosshead Construction - ER Approval																							
0230-1500	8	MS Bridge Demolition - Submission	28	03-Jun-13*	30-Jun-13	MS Bridge Demolition - Submission																							
0230-1900	9	MS Marine Temp Pile Removal - Submission	0	20-Feb-13 A	09-Mar-13 A	MS Marine Temp Pile Removal - Submission																							
0230-1910	9	MS Marine Temp Pile Removal - ER Review & Comment	12	11-Mar-13 A	31-Mar-13	MS Marine Temp Pile Removal - ER Review & Comment																							
0230-1920	9	MS Marine Temp Pile Removal - Resubmission	6	01-Apr-13	06-Apr-13	MS Marine Temp Pile Removal - Resubmission																							
0230-1930	9	MS Marine Temp Pile Removal - ER Approval	12	07-Apr-13	18-Apr-13	MS Marine Temp Pile Removal - ER Approval																							
02.4 - Contractor's Design and Build Items																													
0240-1010	1	Temp Bridge "TA1" Design - Prep & Submit	12	16-Dec-11 A	31-Mar-13	Temp Bridge "TA1" Design - Prep & Submit																							
0240-1020	1	Temp Bridge "TA1" Design - ER review and comment	28	01-Apr-13	28-Apr-13	Temp Bridge "TA1" Design - ER review and comment																							
0240-1030	1	Temp Bridge "TA1" Design - Resubmission	28	29-Apr-13	26-May-13	Temp Bridge "TA1" Design - Resubmission																							
0240-1035	1	Temp Bridge "TA1" Design - ER Approval	21	27-May-13	16-Jun-13	Temp Bridge "TA1" Design - ER Approval																							
0240-1040	1	Temp Bridge "TA" Design - Fabrication	60	08-Jun-13	06-Aug-13	Temp Bridge "TA" Design - Fabrication																							
0240-1041	2	Temp Bridge "TD" Design - Submission	36	01-Mar-13 A	24-Apr-13	Temp Bridge "TD" Design - Submission																							
0240-1042	2	Temp Bridge "TD" Design - ER review and comment	28	25-Apr-13	22-May-13	Temp Bridge "TD" Design - ER review and comment																							
0240-1043	2	Temp Bridge "TD" Design - Resubmission	36	23-May-13	27-Jun-13	Temp Bridge "TD" Design - Resubmission																							
0240-1105	3	Int. Noise Enclosure Structural Design - Submission	42	20-Mar-13	30-Apr-13	Int. Noise Enclosure Structural Design - Submission																							
0240-1110	3	Int. Noise Enclosure Structural Design - ER Review/Resubmission	48	01-May-13	17-Jun-13	Int. Noise Enclosure Structural Design - ER Review/Resubmission																							
0240-1126	4	Noise Barrier Design Structural Design - Submission	42	20-Mar-13	30-Apr-13	Noise Barrier Design Structural Design - Submission																							
0240-1127	4	Noise Barrier Design Structural Design - ER Review/Resubmission	48	01-May-13	17-Jun-13	Noise Barrier Design Structural Design - ER Review/Resubmission																							
0240-1150	5	Perm. Noise Enclosure Structural Design - Submission	42	20-Mar-13	30-Apr-13	Perm. Noise Enclosure Structural Design - Submission																							
0240-1160	5	Perm. Noise Enclosure Structural Design - ER Review/Resubmission	48	01-May-13	17-Jun-13	Perm. Noise Enclosure Structural Design - ER Review/Resubmission																							

- Remaining Level of Effort
- Actual Level of Effort
- Actual Work
- Remaining Work
- Critical Remaining Work
- ◆ Milestone

Contract HY/2009/19

Three Month Rolling Programme (20 FEB 2013 to 19 MAY 2013)

3MRP

3MRP - Mar 2013 to Jun 2013

Page 1 of 7

Activity ID	HY19 Print Sequence	Activity Name	Rem Dur	Start	Finish	2013																																							
						March						April						May						June																					
						18	25	04	11	18	25	01	08	15	22	29	06	13	20	27	03	10	17																						
0330-1100		Works at FEHD Permanent Depot (Stage 1)	36	02-Apr-13*	15-May-13																																								
0330-1110		Submit to FEHD/ER Relocation Sequence & Programme	6	02-Apr-13	09-Apr-13																																								
0330-1120		Relocate FEHD to Permanent Depot at Portions IA & X	12	16-May-13	29-May-13																																								
05 - SECTION 2 & 2A OF THE WORKS																																													
05.1 - Cut & Cover Tunnel Ch 4855-4932 (APS Footprint)																																													
05.1.1 - D-Wall Construction																																													
0511-1054	N	D-wall Panel N49 Construction	0	12-Jan-13 A	11-Mar-13 A																																								
0511-1076	S	D-wall Panel S50 Construction	0	23-Jan-13 A	27-Feb-13 A																																								
0511-1077	S	D-wall Panel S51 Construction	1	01-Mar-13 A	20-Mar-13																																								
0511-1078	S	D-wall Panel S52 Construction	15	22-Mar-13	11-Apr-13																																								
05.2 - Cut & Cover Tunnel Ch 4932-5149																																													
05.2.1 - D-Wall Construction																																													
0521-1990.67	D07A	D-wall South Panel S65 Construction	0	16-Feb-13 A	15-Mar-13 A																																								
0521-1990.72	D07B	D-wall South Panel S58 Construction	0	19-Dec-12 A	20-Feb-13 A																																								
0521-1990.73	D07B	D-wall South Panel S59 Construction	10	22-Feb-13 A	02-Apr-13																																								
0521-1990.74	D07B	D-wall South Panel S60 Construction	24	04-Apr-13	03-May-13																																								
0521-2195	DZ14	Set-up 3rd and 4th Rebar Cage Bed at EVB	0	01-Feb-13 A	28-Feb-13 A																																								
0521-2205	DZ14	Remove/Clear All Rebar Cage Bed at Tunnel Area	0	14-Feb-13 A	28-Feb-13 A																																								
0521-2175	DZ14	Pump Test C&C Tunnel East Part	9	14-Feb-13 A	30-Mar-13																																								
05.2.2 - Barrette Construction																																													
0522-2210.50	DZ2	Barrette Pile BC48	0	28-Jan-13 A	22-Feb-13 A																																								
0522-2210.81	DZ2	Barrette Pile BC51	0	20-Feb-13 A	16-Mar-13 A																																								
0522-2210.51	DZ2	Barrette Pile BC42	15	20-Mar-13	09-Apr-13																																								
0522-2210.82	DZ2	Barrette Pile BC52	15	26-Mar-13	15-Apr-13																																								
0522-2210.84	DZ2	Barrette Pile BC41	15	10-Apr-13	26-Apr-13																																								
0522-2210.83	DZ2	Barrette Pile BC50	15	16-Apr-13	03-May-13																																								
0522-2210.85	DZ2	Barrette Pile BC47	15	19-Apr-13	07-May-13																																								
0522-2210.87	DZ2	Barrette Pile BC40	15	27-Apr-13	15-May-13																																								
0522-2210.86	DZ2	Barrette Pile BC44	15	04-May-13	21-May-13																																								
0522-2210.89	DZ2	Barrette Pile BC46	15	08-May-13	24-May-13																																								
0522-2210.90	DZ2	Barrette Pile BC49	15	11-May-13	28-May-13																																								
0522-2210.88	DZ2	Barrette Pile BC43	15	22-May-13	07-Jun-13																																								
0522-2390.15	DZ6	Bulkhead BW2	13	08-Mar-13 A	06-Apr-13																																								
0522-2390.20	DZ6	Bulkhead BW5	5	14-Feb-13 A	25-Mar-13																																								
0522-2390.30	DZ6	Bulkhead BW4	15	08-Apr-13	24-Apr-13																																								
0522-2390.10	DZ6	Bulkhead BW3	10	29-Apr-13	10-May-13																																								
05.2.3 - ELS																																													
0524-2881.1		Tunnel ELS - Phase 1 Zone 1 - Excav	9	28-Feb-13 A	30-Mar-13																																								
0524-2881.2		Tunnel ELS - Phase 1 Zone 1 - LS + Preload	18	18-Mar-13 A	12-Apr-13																																								
0524-2882.1		Tunnel ELS - Phase 1 Zone 2 - Excav	9	02-Apr-13	12-Apr-13																																								
0524-2882.2		Tunnel ELS - Phase 1 Zone 2 - LS + Preload	12	10-Apr-13	23-Apr-13																																								
0524-2883.1		Tunnel ELS - Phase 1 Zone 3 - Excav	15	13-Apr-13	30-Apr-13																																								
0524-2883.2		Tunnel ELS - Phase 1 Zone 3 - LS + Preload	18	20-Apr-13	11-May-13																																								
0524-2884.1		Tunnel ELS - Phase 1 Zone 4 - Excav	9	02-May-13	11-May-13																																								

- Remaining Level of Effort
- Actual Level of Effort
- Actual Work
- Remaining Work
- Critical Remaining Work
- ◆ Milestone

Contract HY/2009/19


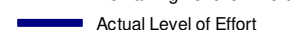
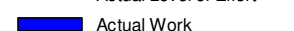
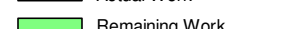
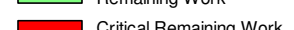
Three Month Rolling Programme (20 FEB 2013 to 19 MAY 2013)

3MRP

3MRP - Mar 2013 to Jun 2013

Page 3 of 7

Activity ID	HY19 Print Sequenc	Activity Name	Rem Dur	Start	Finish	2013																			
						March					April				May				June						
						18	25	04	11	18	25	01	08	15	22	29	06	13	20	27	03	10	17		
0630-3105		Admin Bldg Pile G.I. Report / Founding Level	18	06-Jun-13	27-Jun-13																				
10 - SECTION X OF THE WORKS																									
10.1 - E/B Bridges (Bridge D, E and F)																									
10.1.1 - Marine Pier Construction																									
Pier F03 to F15																									
1011-2150	F03	F3 Pile Cap Shutter Cofferdam	12	23-Jan-13 A	04-Apr-13																				
1011-2155	F03	F3 Pile Cap Construction	21	06-Apr-13	30-Apr-13																				
1011-2160	F03	F3 Pier/Column Construction	12	02-May-13	15-May-13																				
1011-2170	F03	F3 Crosshead Construction	12	16-May-13	29-May-13																				
1011-2975	F03	F3 Extract Temp Pile	6	30-May-13	05-Jun-13																				
1011-2180	F04	F4 Pile Cap Shutter Cofferdam	18	06-Apr-13	26-Apr-13																				
1011-2185	F04	F4 Pile Cap Construction	18	27-Apr-13	18-May-13																				
1011-2190	F04	F4 Pier/Column Construction	12	20-May-13	01-Jun-13																				
1011-2200	F04	F4 Crosshead Construction	18	03-Jun-13	24-Jun-13																				
1011-2210	F05	F5 Pile Cap Shutter Cofferdam	0	25-Feb-13 A	11-Mar-13 A																				
1011-2215	F05	F5 Pile Cap Construction	9	12-Mar-13 A	30-Mar-13																				
1011-2220	F05	F5 Pier/Column Construction	12	02-Apr-13	16-Apr-13																				
1011-2230	F05	F5 Crosshead Construction	18	17-Apr-13	08-May-13																				
1011-2237	F05	Bearing intallation pier F5	6	09-May-13	15-May-13																				
1011-2020	F06	F6 Dismantle Piling Platform	12	20-Feb-13 A	04-Apr-13																				
1011-2240	F06	F6 Pile Cap Shutter Cofferdam	18	06-Apr-13	26-Apr-13																				
1011-2245	F06	F6 Pile Cap Construction	12	27-Apr-13	11-May-13																				
1011-2250	F06	F6 Pier/Column Construction	12	13-May-13	25-May-13																				
1011-2260	F06	F6 Crosshead Construction	24	27-May-13	24-Jun-13																				
1011-2030	F07	F7 Dismantle Piling Platform	12	06-Apr-13	19-Apr-13																				
1011-2270	F07	F7 Pile Cap Shutter Cofferdam	18	20-Apr-13	11-May-13																				
1011-2275	F07	F7 Pile Cap Construction	12	13-May-13	25-May-13																				
1011-2280	F07	F7 Pier/Column Construction	12	27-May-13	08-Jun-13																				
1011-2300	F08	F8 Pile Cap Shutter Cofferdam	18	02-May-13	22-May-13																				
1011-2305	F08	F8 Pile Cap Construction	12	23-May-13	05-Jun-13																				
1011-2310	F08	F8 Pier/Column Construction	12	06-Jun-13	20-Jun-13																				
1011-2050	F09	Dismantle Piling Platform at Pier F9	12	20-Apr-13	04-May-13																				
1011-2060	F10	Dismantle Piling Platform at Pier F10	12	06-May-13	18-May-13																				
1011-1770.5	F11	Pier F11 Dolphin Socketed H-Pile P4	0	26-Jan-13 A	20-Feb-13 A																				
1011-1770.6	F11	Pier F11 Dolphin Socketed H-Pile P6	0	26-Jan-13 A	21-Feb-13 A																				
1011-2070	F11	Dismantle Piling Platform at Pier F11	12	20-May-13	01-Jun-13																				
1011-2350	F11	F11 Pile Cap Construction	18	10-Jun-13	02-Jul-13																				
1011-1822.3	F12	Pier F12 Dolphin Socketed H-Pile P3	0	04-Jan-13 A	04-Mar-13 A																				
1011-1822.5	F12	Pier F12 Dolphin Socketed H-Pile P4	0	01-Feb-13 A	01-Mar-13 A																				
1011-1822.6	F12	Pier F12 Dolphin Socketed H-Pile P6	0	01-Feb-13 A	27-Feb-13 A																				
1011-2075	F12	Dismantle Piling Platform at Pier F12	12	03-Jun-13	17-Jun-13																				
1011-3055	ZB	Existing IEC Bridge - Road Marking	0	28-Jan-13 A	03-Mar-13 A																				
1011-3005	ZB	Design of Temporary Parapet for IEC at Pier F8 to F14	24	15-Jan-13 A	19-Apr-13																				
1011-3035	ZB	Submit MS for Construction of Temp Parapet at IEC Bridge	9	11-Feb-13 A	30-Mar-13																				

-  Remaining Level of Effort
-  Actual Level of Effort
-  Actual Work
-  Remaining Work
-  Critical Remaining Work
-  Milestone

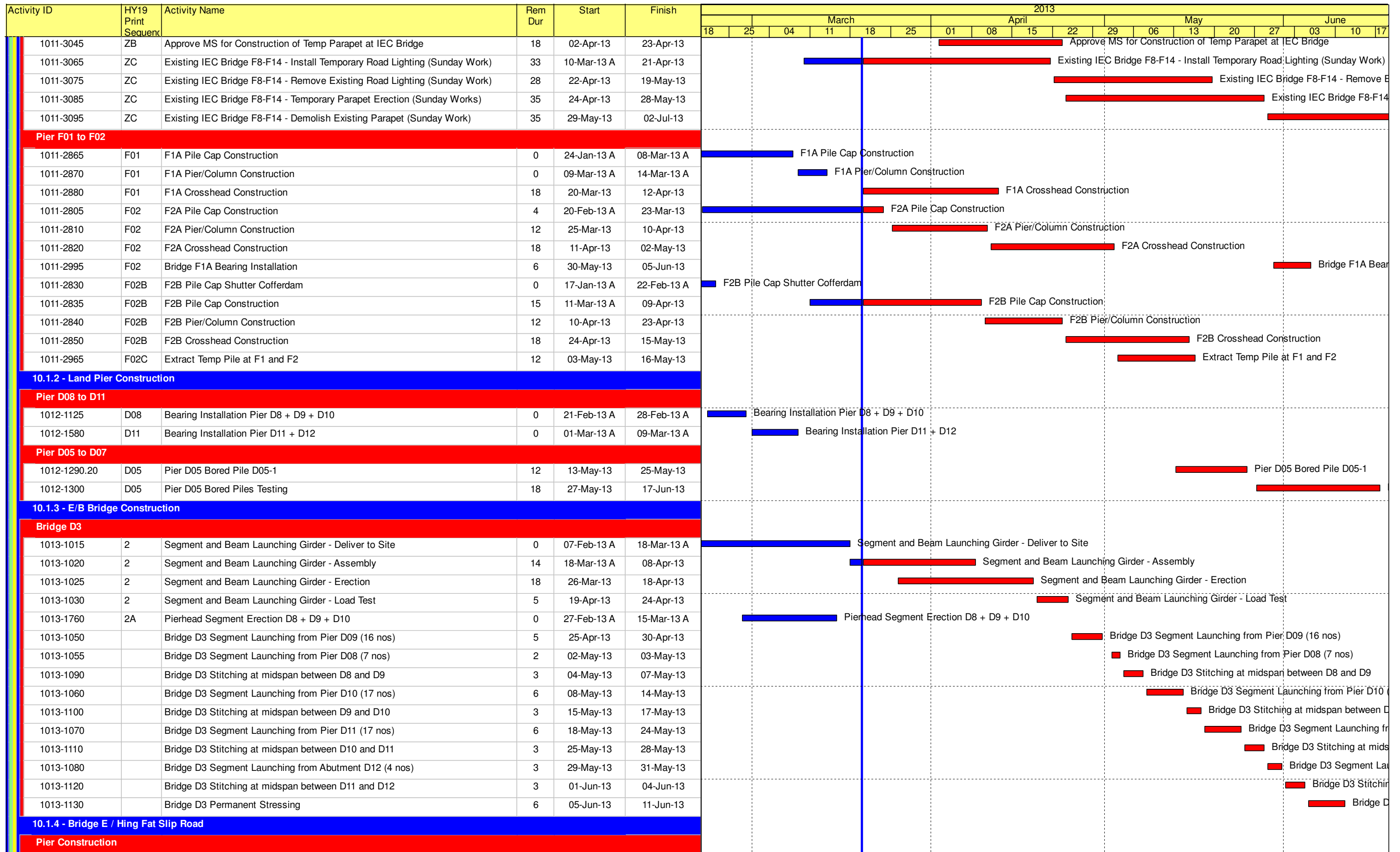
Contract HY/2009/19

Three Month Rolling Programme (20 FEB 2013 to 19 MAY 2013)

3MRP

3MRP - Mar 2013 to Jun 2013

Page 5 of 7



- Remaining Level of Effort
- Actual Level of Effort
- Actual Work
- Remaining Work
- Critical Remaining Work
- ◆ Milestone

Contract HY/2009/19

Three Month Rolling Programme (20 FEB 2013 to 19 MAY 2013)

3MRP

3MRP - Mar 2013 to Jun 2013

Activity ID	HY19 Print Sequenc	Activity Name	Rem Dur	Start	Finish	2013																	
						March				April				May				June					
						18	25	04	11	18	25	01	08	15	22	29	06	13	20	27	03	10	17
1014-1010		Pier E1b-4 Bored Pile	0	12-Jan-13 A	20-Feb-13 A	Pier E1b-4 Bored Pile																	
1014-1220		Pier E1b-1 Bored Pile	18	29-May-13*	19-Jun-13	Pier E1b-1 Bored Pile																	
10.3 - Middle Bridge (Bridge F)																							
10.3.1 - Pier Construction																							
Abutment D12																							
1031-1053		Bored pile D12-12 (low headroom)	0	14-Jan-13 A	21-Feb-13 A	Bored pile D12-12 (low headroom)																	
1031-1055		Bored pile D12-05 (low headroom)	12	04-Mar-13 A	04-Apr-13	Bored pile D12-05 (low headroom)																	
1031-1370		Bored pile D12-13 (low headroom)	8	01-Mar-13 A	28-Mar-13	Bored pile D12-13 (low headroom)																	
1031-1380		Bored pile D12-06 (low headroom)	30	06-Apr-13	11-May-13	Bored pile D12-06 (low headroom)																	
1031-1390		Bored pile D12-14 (low headroom)	30	06-Apr-13	11-May-13	Bored pile D12-14 (low headroom)																	
1031-1400		Bored pile D12-07 (low headroom)	30	13-May-13	17-Jun-13	Bored pile D12-07 (low headroom)																	
10.6 - Tunnel Approach Ramp																							
10.6.1 - Approach Ramp (Excluding Portion IIB)																							
Bored Piles																							
1061-1520		Bored Pile Ramp - BN03	3	22-Feb-13 A	22-Mar-13	Bored Pile Ramp - BN03																	
1061-1530		Bored Pile Ramp - BN010	14	14-Mar-13 A	08-Apr-13	Bored Pile Ramp - BN010																	
1061-1540		Bored Pile Ramp - BN04	18	27-Mar-13	19-Apr-13	Bored Pile Ramp - BN04																	
1061-1550		Bored Pile Ramp - BN011	18	12-Apr-13	03-May-13	Bored Pile Ramp - BN011																	
1061-1560		Bored Pile Ramp - BN05	18	24-Apr-13	15-May-13	Bored Pile Ramp - BN05																	
1061-1570		Bored Pile Ramp - BN012	18	08-May-13	28-May-13	Bored Pile Ramp - BN012																	
1061-1580		Bored Pile Ramp - BN06	18	20-May-13	08-Jun-13	Bored Pile Ramp - BN06																	
1061-1590		Bored Pile Ramp - BN013	18	01-Jun-13	22-Jun-13	Bored Pile Ramp - BN013																	

- Remaining Level of Effort
- Actual Level of Effort
- Actual Work
- Remaining Work
- Critical Remaining Work
- ◆ Milestone

Contract HY/2009/19

Three Month Rolling Programme (20 FEB 2013 to 19 MAY 2013)

3MRP

3MRP - Mar 2013 to Jun 2013

Page 7 of 7

Activity ID	Activity Name	Rem Dur	Start	Finish	2013															
					May					June				July				August		
					22	29	06	13	20	27	03	10	17	24	01	08	15	22	29	05
0250-1600.10	Bridge F1 Pier F1A Precasting Segment (1-13) - Mould S1	9	22-Apr-13 A	28-May-13	Bridge F1 Pier F1A Precasting Segment (1-13) - Mould S1															
0250-1600.11	Bridge F2 Pier F04 Precasting Segment (1-13) - Mould S1	28	29-May-13	25-Jun-13	Bridge F2 Pier F04 Precasting Segment (1-13) - Mould S1															
0250-1600.12	Bridge D2 Pier D07 Precasting Segment (1-17) - Mould S1	42	26-Jun-13	06-Aug-13	Bridge D2 Pier D07 Precasting Segment (1-17) - Mould S1															
0250-1600.13	Bridge D2 Pier D06 Precasting Segment (1-17) - Mould S1	42	07-Aug-13	17-Sep-13	Bridge D2 Pier D06 Precasting Segment (1-17) - Mould S1															
0250-1650.02	Bridge D3 Pier D12 Precasting Segment (1-4) - Mould S2	0	24-Mar-13 A	27-Apr-13 A	Bridge D3 Pier D12 Precasting Segment (1-4) - Mould S2															
0250-1650.06	Bridge F1 Pier F2A Precasting Segment (1-11) - Mould S1	0	18-Mar-13 A	04-May-13 A	Bridge F1 Pier F2A Precasting Segment (1-11) - Mould S1															
0250-1650.03	Bridge F1 Pier D12 Precasting Segment (1-5) - Mould S2	17	18-May-13 A	05-Jun-13	Bridge F1 Pier D12 Precasting Segment (1-5) - Mould S2															
0250-1650.04	Bridge F1 Pier F03 Precasting Segment (1-6) - Mould S2	21	06-Jun-13	26-Jun-13	Bridge F1 Pier F03 Precasting Segment (1-6) - Mould S2															
0250-1650.05	Bridge F2 Pier F03 Precasting Segment (1-5) - Mould S2	18	27-Jun-13	14-Jul-13	Bridge F2 Pier F03 Precasting Segment (1-5) - Mould S2															
0250-1650.16	Bridge F2 Pier F05 Precasting Segment (1-6) - Mould S2	21	15-Jul-13	04-Aug-13	Bridge F2 Pier F05 Precasting Segment (1-6) - Mould S2															
0250-1650.17	Bridge D2 Pier D08 Precasting Segment (1-8) - Mould S2	24	05-Aug-13	28-Aug-13	Bridge D2 Pier D08 Precasting Segment (1-8) - Mould S2															
0250-1655.01	Bridge F3 - F05 Segment - Pier Segment +1 (2 nos) - Mould T	7	13-May-13 A	26-May-13	Bridge F3 - F05 Segment - Pier Segment +1 (2 nos) - Mould T															
0250-1655.02	Bridge F3 - F05 Segment - Remaining (4 nos) - Mould T	12	27-May-13	07-Jun-13	Bridge F3 - F05 Segment - Remaining (4 nos) - Mould T															
0250-1655.03	Bridge F3 - F06 Segment - Pier Segment + 2 (3 nos) - Mould T	10	08-Jun-13	17-Jun-13	Bridge F3 - F06 Segment - Pier Segment + 2 (3 nos) - Mould T															
0250-1655.04	Bridge F3 - F06 Segment - Remaining (10 nos) - Mould T	30	18-Jun-13	17-Jul-13	Bridge F3 - F06 Segment - Remaining (10 nos) - Mould T															
0250-1655.014	Bridge F3 - F07 Segment - Pier Segment +2 (3 nos) - Mould T	10	18-Jul-13	27-Jul-13	Bridge F3 - F07 Segment - Pier Segment +2 (3 nos) - Mould T															
0250-1655.024	Bridge F3 - F07 Segment - Remaining (10 nos) - Mould T	30	28-Jul-13	26-Aug-13	Bridge F3 - F07 Segment - Remaining (10 nos) - Mould T															
0250-1830	Segment Storage - Portal Gantry Foundation + Rail Stage 3	6	22-May-13	28-May-13	Segment Storage - Portal Gantry Foundation + Rail Stage 3															
0250-1860	Segment Unloading Derrick - Assembly + T&C + RPE Cert	8	18-Apr-13 A	28-May-13	Segment Unloading Derrick - Assembly + T&C + RPE Cert															
0250-1880	Commence Segments Delivery to Site	0	30-Apr-13 A		◆ Commence Segments Delivery to Site															
03 - PRELIMINARY WORKS																				
03.3 - Interface Works																				
0330-1110	Submit to FEHD/ER Relocation Sequence & Programme	18	20-May-13	08-Jun-13	Submit to FEHD/ER Relocation Sequence & Programme															
0330-1100	Works at FEHD Permanent Depot (Stage 1)	36	10-Jun-13*	23-Jul-13	Works at FEHD Permanent Depot (Stage 1)															
0330-1120	Relocate FEHD to Permanent Depot at Portions IA & X	12	24-Jul-13	06-Aug-13	Relocate FEHD to Permanent Depot at Portions IA & X															
05 - SECTION 2 & 2A OF THE WORKS																				
05.1 - Cut & Cover Tunnel Ch 4855-4932 (APS Footprint)																				
05.1.1 - D-Wall Construction																				
0511-1088	Dismantle Bentonite Plant - EVB Area	18	13-May-13 A	08-Jun-13	Dismantle Bentonite Plant - EVB Area															
0511-1090	Install Dewatering Well - EVB Area	18	24-Jun-13	15-Jul-13	Install Dewatering Well - EVB Area															
0511-1095	Install King Post - EVB Area	36	24-Jun-13	05-Aug-13	Install King Post - EVB Area															
0511-1091	Install Observation Well - EVB Area	18	05-Jul-13	25-Jul-13	Install Observation Well - EVB Area															
0511-1092	Install Recharging Well - EVB Area	18	16-Jul-13	05-Aug-13	Install Recharging Well - EVB Area															
0511-1110	Pump Test - EVB Area	9	06-Aug-13	15-Aug-13	Pump Test - EVB Area															
05.2 - Cut & Cover Tunnel Ch 4932-5149																				
05.2.1 - D-Wall Construction																				
0521-1990.74	D-wall South Panel S60 Construction	0	10-Apr-13 A	07-May-13 A	D-wall South Panel S60 Construction															
0521-2176	Install Additional Dewatering Well (5 nos.)	0	19-Apr-13 A	07-May-13 A	Install Additional Dewatering Well (5 nos.)															
0521-2177	Install Additional Observation Well (7 nos.)	0	27-Apr-13 A	14-May-13 A	Install Additional Observation Well (7 nos.)															
0521-2178	Pump Test C&C Tunnel Stage 2	9	23-May-13	01-Jun-13	Pump Test C&C Tunnel Stage 2															
0521-1880	D-wall N71-N73 Grouting for Existing Seawall Rubble Mound	15	02-Jul-13	18-Jul-13	D-wall N71-N73 Grouting for Existing Seawall Rubble Mound															
0521-2140	D-wall S78-S80 Guide Wall	12	02-Jul-13	15-Jul-13	D-wall S78-S80 Guide Wall															
0521-1890	D-wall N71-N73 Guide Wall	12	19-Jul-13	01-Aug-13	D-wall N71-N73 Guide Wall															
0521-2145.10	D-wall Panel S78	10	19-Jul-13	30-Jul-13	D-wall Panel S78															

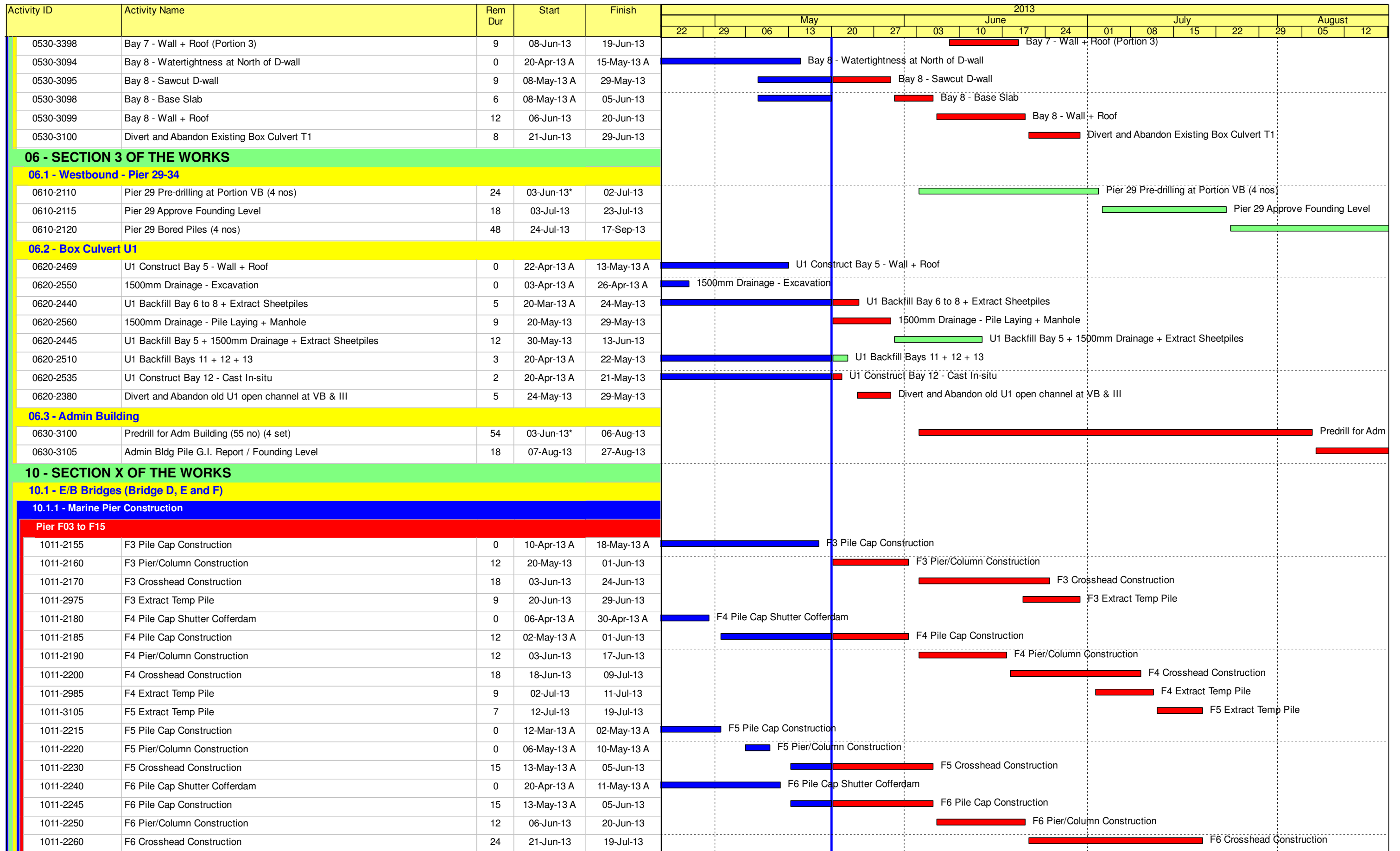
- █ Remaining Level of Effort
- █ Actual Level of Effort
- █ Actual Work
- █ Remaining Work
- █ Critical Remaining Work
- ◆ Milestone

Contract HY/2009/19

Three Month Rolling Programme (20 May 2013 to 19 Aug 2013)

3MRP

3MRP - May 2013 to Aug 2013



- Remaining Level of Effort
- Actual Level of Effort
- Actual Work
- Remaining Work
- Critical Remaining Work
- Milestone

Contract HY/2009/19
Three Month Rolling Programme (20 May 2013 to 19 Aug 2013)

3MRP
 3MRP - May 2013 to Aug 2013
 Page 4 of 7

Activity ID	Activity Name	Rem Dur	Start	Finish	2013															
					May					June				July				August		
					22	29	06	13	20	27	03	10	17	24	01	08	15	22	29	05
1011-2995	Bridge F1A Bearing Installation	12	20-May-13	01-Jun-13																
1011-2835	F2B Pile Cap Construction	12	11-Mar-13 A	01-Jun-13																
1011-2840	F2B Pier/Column Construction	12	03-Jun-13	17-Jun-13																
1011-2850	F2B Crosshead Construction	18	18-Jun-13	09-Jul-13																
1011-2965	Extract Temp Pile at F1 and F2	15	01-Jun-13	19-Jun-13																
10.1.2 - Land Pier Construction																				
Pier D05 to D07																				
1012-1290.20	Pier D05 Bored Pile D05-1	20	11-Jun-13	05-Jul-13																
1012-1300	Pier D05 Bored Piles Testing	18	06-Jul-13	26-Jul-13																
1012-1500	Pier D05 Drive Sheetpiles + ELS	18	27-Jul-13	16-Aug-13																
1012-1335	Pier D07 Drive Sheet Pile + ELS	18	20-May-13	08-Jun-13																
1012-1340	Pier D07 Construct Pile Cap	12	10-Jun-13	24-Jun-13																
1012-1350	Pier D07 Construct Pier/Column	12	25-Jun-13	09-Jul-13																
1012-1360	Pier D07 Construct Crosshead	18	10-Jul-13	30-Jul-13																
1012-1305	Pier D06 Drive Sheet Pile + ELS	18	01-Aug-13*	21-Aug-13																
10.1.3 - E/B Bridge Construction																				
Bridge D3																				
1013-1020	Segment and Beam Launching Girder - Assembly	0	18-Mar-13 A	26-Apr-13 A																
1013-1025	Segment and Beam Launching Girder - Erection	0	26-Mar-13 A	15-May-13 A																
1013-1030	Segment and Beam Launching Girder - Load Test	8	16-May-13 A	28-May-13																
1013-1050	Bridge D3 Segment Launching from Pier D09 (16 nos)	5	29-May-13	03-Jun-13																
1013-1055	Bridge D3 Segment Launching from Pier D08 (7 nos)	2	04-Jun-13	05-Jun-13																
1013-1090	Bridge D3 Stitching at midspan between D8 and D9	3	06-Jun-13	08-Jun-13																
1013-1060	Bridge D3 Segment Launching from Pier D10 (17 nos)	6	10-Jun-13	17-Jun-13																
1013-1100	Bridge D3 Stitching at midspan between D9 and D10	3	18-Jun-13	20-Jun-13																
1013-1070	Bridge D3 Segment Launching from Pier D11 (17 nos)	6	21-Jun-13	27-Jun-13																
1013-1110	Bridge D3 Stitching at midspan between D10 and D11	3	28-Jun-13	02-Jul-13																
1013-1080	Bridge D3 Segment Launching from Abutment D12 (4 nos)	3	03-Jul-13	05-Jul-13																
1013-1120	Bridge D3 Stitching at midspan between D11 and D12	3	06-Jul-13	09-Jul-13																
1013-1130	Bridge D3 Permanent Stressing	6	10-Jul-13	16-Jul-13																
Bridge F1A																				
1013-1155	Bridge F1A Pier Segments at D12+F1A+F2A	3	17-Jul-13	19-Jul-13																
1013-1170	Bridge F1A Segment Launching from Pier F1A (12 nos)	5	20-Jul-13	25-Jul-13																
1013-1160	Bridge F1A Segment Launching from Abutment D12 (4 nos)	2	26-Jul-13	27-Jul-13																
1013-1180	Bridge F1A Segment Launching from Pier F2A (11 nos)	7	26-Jul-13	02-Aug-13																
1013-1200	Bridge F1A Stitching at midspan between D12 and F1A	3	29-Jul-13	31-Jul-13																
1013-1190	Bridge F1A Segment Launching from Pier F3 (6 nos)	7	03-Aug-13	10-Aug-13																
1013-1210	Bridge F1A Stitching at midspan between F1A and F2A	3	03-Aug-13	06-Aug-13																
1013-1220	Bridge F1A Stitching at midspan between F2A and F3	3	12-Aug-13	14-Aug-13																
Bridge F2A																				
1013-1260	Bridge F2A Segment Launching from Pier F3 (5 nos)	5	06-Aug-13	10-Aug-13																
1013-1270	Bridge F2A Segment Launching from Pier F4 (13 nos)	8	12-Aug-13	20-Aug-13																
10.1.4 - Bridge E / Hing Fat Slip Road																				
Pier Construction																				

- Remaining Level of Effort
- Actual Level of Effort
- Actual Work
- Remaining Work
- Critical Remaining Work
- ◆ Milestone

Contract HY/2009/19

Three Month Rolling Programme (20 May 2013 to 19 Aug 2013)

3MRP

3MRP - May 2013 to Aug 2013

Activity ID	Activity Name	Rem Dur	Start	Finish	2013															
					May				June				July				August			
					22	29	06	13	20	27	03	10	17	24	01	08	15	22	29	05
1014-1085	Pier E2 Pile Cap (north part)	18	23-May-13	13-Jun-13																
1014-1086	Pier E2 Column	9	14-Jun-13	24-Jun-13																
1014-1087	Pier E2 Crosshead + Bearing	30	25-Jun-13	30-Jul-13																
1014-1220	Pier E1b-3 Bored Pile	15	08-May-13 A	05-Jun-13																
1014-1230	Pier E1b-1 Bored Pile	30	06-Jun-13	12-Jul-13																
1014-1240	Pier E1b-2 Bored Pile	30	13-Jul-13	16-Aug-13																
10.3 - Middle Bridge (Bridge F)																				
10.3.1 - Pier Construction																				
Abutment D12																				
1031-1370	Bored pile D12-13 (low headroom)	0	01-Mar-13 A	02-May-13 A																
1031-1390	Bored pile D12-14 (low headroom)	2	10-Apr-13 A	21-May-13																
1031-1380	Bored pile D12-06 (low headroom)	30	22-May-13	26-Jun-13																
1031-1400	Bored pile D12-07 (low headroom)	30	27-Jun-13	01-Aug-13																
10.5 - Temporary Bridge																				
10.5.1 - Temporary Bridge 'TA'																				
1051-1009	Temporary Bridge TA1 - Fabrication Off-site	28	22-May-13	24-Jun-13																
1051-1011	Temporary Bridge TA1 - Footing	24	27-May-13	24-Jun-13																
1051-1012	Temporary Bridge TA1 - Steel Column	18	25-Jun-13	16-Jul-13																
1051-1015	Temporary Bridge TA1 - Bridge Deck	30	24-Jul-13	27-Aug-13																
10.6 - Tunnel Approach Ramp																				
10.6.1 - Approach Ramp (Excluding Portion IIB)																				
Bored Piles																				
1061-1530	Bored Pile Ramp - BN010	0	25-Mar-13 A	22-Apr-13 A																
1061-1540	Bored Pile Ramp - BN09	0	23-Apr-13 A	09-May-13 A																
1061-1550	Bored Pile Ramp - BN08	7	13-May-13 A	27-May-13																
1061-1560	Bored Pile Ramp - BN02	18	28-May-13	18-Jun-13																
1061-1570	Bored Pile Ramp - BN01	18	19-Jun-13	10-Jul-13																
1061-1580	Bored Pile Ramp - BN04	18	11-Jul-13	31-Jul-13																
1061-1590	Bored Pile Ramp - BN013	18	01-Aug-13	21-Aug-13																

- Remaining Level of Effort
- Actual Level of Effort
- Actual Work
- Remaining Work
- Critical Remaining Work
- ◆ Milestone

Contract HY/2009/19

Three Month Rolling Programme (20 May 2013 to 19 Aug 2013)

3MRP

3MRP - May 2013 to Aug 2013

Page 7 of 7



Activity ID	Activity Name	Orig Dur	Early Start	Early Finish	Total Float	2013											
						Apr	May	Jun	Jul	Aug	Sep	Oct	Nov	Dec			
HK/2012/08 Reviewd Programme for Progress Meeting - Updated to 20 May 2013																	
Key Dates and Milestone Dates																	
Key Dates																	
C100000	Letter of Acceptance	0	22-Jan-13 A														
C100020	Commencement of Works	0	31-Jan-13 A														
Dredging and Reclamation																	
Design and Engineering																	
C105100	Marine - assessment report on impact to MTR-TWL tunnel - prepare and submit to ICE	60	01-Apr-13 A	30-Apr-13 A													
C105120	Marine - assessment report on impact to MTR-TWL tunnel - ICE check and issue ICE cert	14	20-May-13	02-Jun-13	29												
C105140	Marine - assessment report on impact to MTR - TWL tunnel - Eng comment and approve	28	03-Jun-13	30-Jun-13	29												
Submission and Approval																	
C102400	Marine - Marine Notice to Marine Dept (Dredging) - prepare and submit	14	01-Feb-13 A	25-Feb-13 A													
C102420	Marine - Marine Notice to Marine Dept (Dredging) - MD comment & accept	30	26-Feb-13 A	25-Apr-13 A													
Construction																	
General Work for Marine Work																	
W0001500	Marine - Initial Hydrographic Survey and issue survey report (Portion 1)	14	26-Feb-13 A	19-Apr-13 A													
W0001505	Marine - Initial Hydrographic Survey and issue survey report (Portion 1C)	14	31-May-13	17-Jun-13	25												
W0001510	Marine - Initial Hydrographic Survey and issue survey report (Portion 1A, 1B)	14	31-May-13	17-Jun-13	9												
W0001520	Marine - Install Silt Curtain	10	08-Jul-13	18-Jul-13	9												
W0001522	Marine - Vibrocore - Area C	4	31-May-13	04-Jun-13	24												
W0001524	Marine - Vibrocore - Area B	3	12-May-13 A	13-May-13 A													
W0001526	Marine - Vibrocore - Area A1	3	15-May-13 A	21-May-13 A													
W0001530	Marine - Continous Piezocone Penetration Test (CPPT) - Area C	21	05-Jun-13	29-Jun-13	24												
W0001535	Marine - Continous Piezocone Penetration Test (CPPT) - Area B	15	03-May-13 A	21-May-13 A													
W0001542	Marine - Continous Piezocone Penetration Test (CPPT) - Area A2	12	02-Jul-13	15-Jul-13	76												
W0001545	Marine - Continous Piezocone Penetration Test (CPPT) - Area A1 & CR11	12	15-May-13 A	21-May-13 A													
W0001546	Marine - Continous Piezocone Penetration Test (CPPT) - Area D	11	18-Jun-13	29-Jun-13	151												
Zone C - Demolish Expo Drive West Bridge																	
A10136	Area C - Expo Drive - remove street furniture and asphalt surface	10	20-May-13	30-May-13	16												
A10140	Area C - Expo Drive - erect temporary support frame for demolition work	20	01-Jun-13	25-Jun-13	15												
A10160	Area C - Expo Drive - saw cut and remove (portion 1)	5	26-Jun-13	02-Jul-13	15												
A10180	Area C - Expo Drive - saw cut and remove (portion 2)	5	03-Jul-13	08-Jul-13	15												
A10200	Area C - Expo Drive - saw cut and remove (portion 3)	5	09-Jul-13	13-Jul-13	15												
A10220	Area C - Expo Drive - saw cut and remove (portion 4)	5	15-Jul-13	19-Jul-13	15												
A10240	Area C - Expo Drive - saw cut and remove (portion 5)	5	20-Jul-13	25-Jul-13	15												
A10260	Area C - Expo Drive - saw cut and remove (portion 6)	5	26-Jul-13	31-Jul-13	15												
A10280	Area C - Expo Drive - saw cut and remove (portion 7)	5	01-Aug-13	06-Aug-13	15												
A10300	Area C - Expo Drive - saw cut and remove (portion 8)	5	07-Aug-13	12-Aug-13	15												
A10320	Area C - Expo Drive - saw cut and remove (portion 9)	5	13-Aug-13	17-Aug-13	15												
A10340	Area C - Expo Drive - saw cut and remove (portion 10)	5	19-Aug-13	23-Aug-13	15												
Zone C																	
W0003150	Area C - temp. seawall - form rock fill foundation	8	17-Aug-13	26-Aug-13	9												
W0003160	Area C - temp. seawall - place temp concrete block	8	27-Aug-13	04-Sep-13	9												
W0003170	Area C - C4 unit - Grade 75 Rockfill along C4 unit	8	27-Aug-13	04-Sep-13	9												
W0003180	Area C - WD11 Box 1 temp SW - place temporary rock mount	2	27-Aug-13	28-Aug-13	11												

◆ Current Milestone
■ Actual Work
■ Critical Remaining Work
■ Remaining Work
■ % Complete

Reviewed 3M Rolling Programme for Wan Chai Development Phase II
(Updated Date 20-May-13)

Date	Revision	Checked	Approved
21-May-13			

